



MRP-L20 Polyclonal Antibody

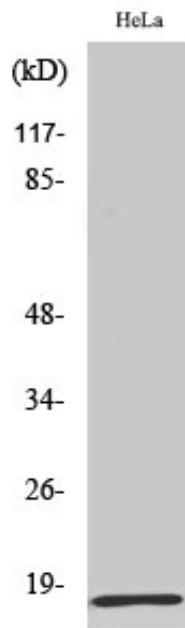
Catalog_no :	AT2852
Applications :	WB,IHC-p,ELISA
Reactivity :	Human,Mouse,Rat
Category :	抗原抗体
Size :	100µg/50µg/20µg
Gene_name :	MRPL20
Protein_name :	39S ribosomal protein L20 mitochondrial
Humangene_id :	55052
Humanswissprot_no :	Q9BYC9
Mousegene_id :	66448
Mouseswissprot_no :	Q9CQL4
Immunogen :	The antiserum was produced against synthesized peptide derived from human MRPL20. AA range:100-149
Specificity :	MRP-L20 Polyclonal Antibody detects endogenous levels of MRP-L20 protein.
Formulation :	Liquid in PBS containing 50% glycerol, 0.5% BSA and 0.02% sodium azide.
Source :	Rabbit
Dilution :	Western Blot: 1/500 - 1/2000. Immunohistochemistry: 1/100 - 1/300. ELISA: 1/40000. Not yet tested in other applications.
Purification :	The antibody was affinity-purified from rabbit antiserum by affinity-chromatography using epitope-specific immunogen.
Concentration :	1 mg/ml
Storage_stability :	-20°C/1 year
Msds :	MSDS_Antibody.pdf
Other_name :	MRPL20; 39S ribosomal protein L20; mitochondrial; L20mt; MRP-L20
Molecular Weight :	22KD



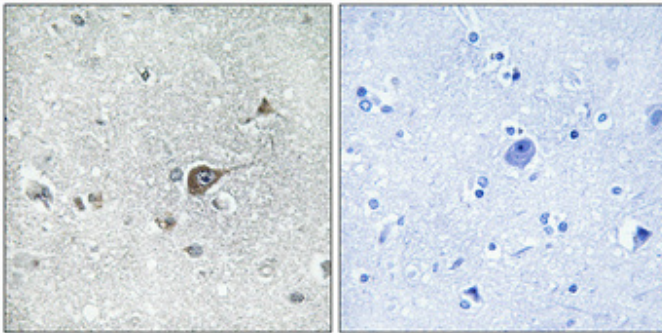
专注二抗产品

Biodragon旗下品牌

Product Images



Western Blot analysis of various cells using MRP-L20 Polyclonal Antibody



Immunohistochemical analysis of paraffin-embedded Human brain. Antibody was diluted at 1:100(4°,overnight). High-pressure and temperature Tris-EDTA,pH8.0 was used for antigen retrieval. Negative contrl (right) obtaned from antibody was pre-absorbed by immunogen peptide.