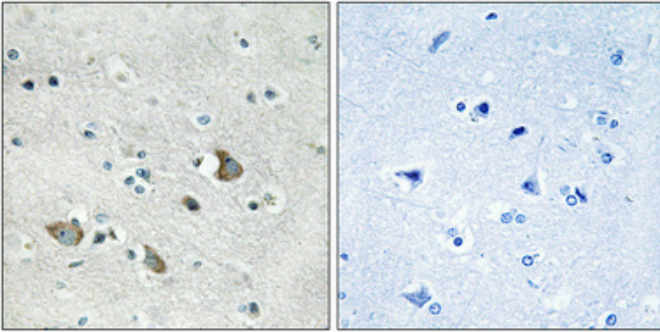




MRP-L32 Polyclonal Antibody

Catalog_no :	AT2857
Applications :	WB,IHC-p,IF,ELISA
Reactivity :	Human
Category :	抗原抗体
Size :	100µg/50µg/20µg
Gene_name :	MRPL32
Protein_name :	39S ribosomal protein L32 mitochondrial
Humangene_id :	64983
Humanswissprot_no :	Q9BYC8
Immunogen :	The antiserum was produced against synthesized peptide derived from human MRPL32. AA range:101-150
Specificity :	MRP-L32 Polyclonal Antibody detects endogenous levels of MRP-L32 protein.
Formulation :	Liquid in PBS containing 50% glycerol, 0.5% BSA and 0.02% sodium azide.
Source :	Rabbit
Dilution :	Western Blot: 1/500 - 1/2000. Immunohistochemistry: 1/100 - 1/300. Immunofluorescence: 1/200 - 1/1000. ELISA: 1/40000. Not yet tested in other applications.
Purification :	The antibody was affinity-purified from rabbit antiserum by affinity-chromatography using epitope-specific immunogen.
Concentration :	1 mg/ml
Storage_stability :	-20°C/1 year
Msds :	MSDS_Antibody.pdf
Other_name :	MRPL32; HSPC283; 39S ribosomal protein L32; mitochondrial; L32mt; MRP-L32
Molecular Weight :	21KD

Product Images



Immunohistochemical analysis of paraffin-embedded Human brain. Antibody was diluted at 1:100(4°,overnight). High-pressure and temperature Tris-EDTA,pH8.0 was used for antigen retrieval. Negative contrl (right) obtaned from antibody was pre-absorbed by immunogen peptide.