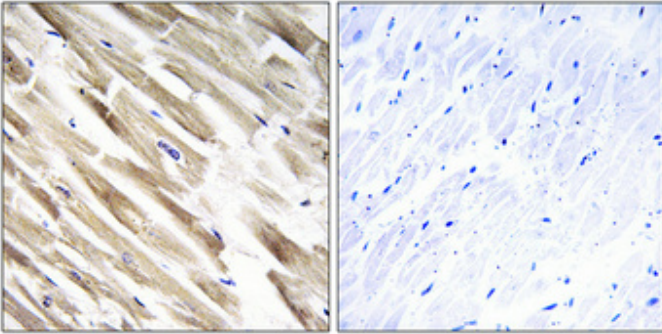


## MRP-L33 Polyclonal Antibody

Catalog_no :	AT2858
Applications :	IHC-p,ELISA
Reactivity :	Human
Category :	抗原抗体
Size :	100µg/50µg/20µg
Gene_name :	MRPL33
Protein_name :	39S ribosomal protein L33 mitochondrial
Humangene_id :	<a href="#">9553</a>
Humanswissprot_no :	<a href="#">O75394</a>
Immunogen :	The antiserum was produced against synthesized peptide derived from human MRPL33. AA range:10-59
Specificity :	MRP-L33 Polyclonal Antibody detects endogenous levels of MRP-L33 protein.
Formulation :	Liquid in PBS containing 50% glycerol, 0.5% BSA and 0.02% sodium azide.
Source :	Rabbit
Dilution :	Immunohistochemistry: 1/100 - 1/300. ELISA: 1/10000. Not yet tested in other applications.
Purification :	The antibody was affinity-purified from rabbit antiserum by affinity-chromatography using epitope-specific immunogen.
Concentration :	1 mg/ml
Storage_stability :	-20°C/1 year
Msds :	MSDS_Antibody.pdf
Other_name :	MRPL33; C2orf1; 39S ribosomal protein L33; mitochondrial; L33mt; MRP-L33

## Product Images



Immunohistochemical analysis of paraffin-embedded Human heart. Antibody was diluted at 1:100(4°,overnight). High-pressure and temperature Tris-EDTA,pH8.0 was used for antigen retrieval. Negative contrl (right) obtaned from antibody was pre-absorbed by immunogen peptide.