

## MRP-L4 Polyclonal Antibody

Catalog_no :	AT2861
Applications :	WB,IHC-p,ELISA
Reactivity :	Human,Mouse
Category :	抗原抗体
Size :	100µg/50µg/20µg
Gene_name :	MRPL4
Protein_name :	39S ribosomal protein L4 mitochondrial
Humangene_id :	<a href="#">51073</a>
Humanswissprot_no :	<a href="#">Q9BYD3</a>
Mousegene_id :	<a href="#">66163</a>
Mouseswissprot_no :	<a href="#">Q9DCU6</a>
Immunogen :	The antiserum was produced against synthesized peptide derived from human MRPL4. AA range:90-139
Specificity :	MRP-L4 Polyclonal Antibody detects endogenous levels of MRP-L4 protein.
Formulation :	Liquid in PBS containing 50% glycerol, 0.5% BSA and 0.02% sodium azide.
Source :	Rabbit
Dilution :	Western Blot: 1/500 - 1/2000. Immunohistochemistry: 1/100 - 1/300. ELISA: 1/20000. Not yet tested in other applications.
Purification :	The antibody was affinity-purified from rabbit antiserum by affinity-chromatography using epitope-specific immunogen.
Concentration :	1 mg/ml
Storage_stability :	-20°C/1 year
Msds :	<a href="#">MSDS_Antibody.pdf</a>
Other_name :	MRPL4; CDABP0091; CGI-28; 39S ribosomal protein L4; mitochondrial; L4mt; MRP-L4
Molecular Weight :	35KD



**专注二抗产品**

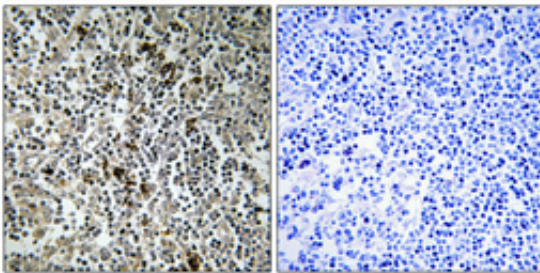
Biodragon旗下品牌

---

## Product Images



Western Blot analysis of various cells using MRP-L4 Polyclonal Antibody



Immunohistochemical analysis of paraffin-embedded Human lung cancer. Antibody was diluted at 1:100(4°,overnight). High-pressure and temperature Tris-EDTA,pH8.0 was used for antigen retrieval. Negative contrl (right) obtaned from antibody was pre-absorbed by immunogen peptide.