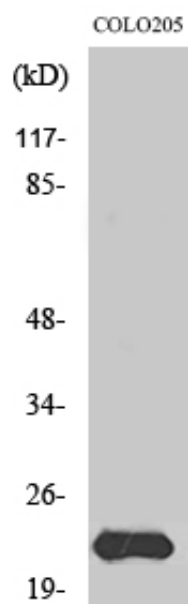




MRP-L40 Polyclonal Antibody

Catalog_no :	AT2862
Applications :	WB,IHC-p,ELISA
Reactivity :	Human
Category :	抗原抗体
Size :	100µg/50µg/20µg
Gene_name :	MRPL40
Protein_name :	39S ribosomal protein L40 mitochondrial
Humangene_id :	64976
Humanswissprot_no :	Q9NQ50
Immunogen :	The antiserum was produced against synthesized peptide derived from human MRPL40. AA range:101-150
Specificity :	MRP-L40 Polyclonal Antibody detects endogenous levels of MRP-L40 protein.
Formulation :	Liquid in PBS containing 50% glycerol, 0.5% BSA and 0.02% sodium azide.
Source :	Rabbit
Dilution :	Western Blot: 1/500 - 1/2000. Immunohistochemistry: 1/100 - 1/300. ELISA: 1/40000. Not yet tested in other applications.
Purification :	The antibody was affinity-purified from rabbit antiserum by affinity-chromatography using epitope-specific immunogen.
Concentration :	1 mg/ml
Storage_stability :	-20°C/1 year
Msds :	MSDS_Antibody.pdf
Other_name :	MRPL40; NLVCF; URIM; 39S ribosomal protein L40; mitochondrial; L40mt; MRP-L40; Nuclear localization signal-containing protein deleted in velocardiofacial syndrome; Up-regulated in metastasis
Molecular Weight :	24KD

Product Images



Western Blot analysis of various cells using MRP-L40
Polyclonal Antibody diluted at 1 : 1000