

## MRP-L41 Polyclonal Antibody

Catalog_no :	AT2863
Applications :	WB,IHC-p,ELISA
Reactivity :	Human,Mouse,Rat
Category :	抗原抗体
Size :	100µg/50µg/20µg
Gene_name :	MRPL41
Protein_name :	39S ribosomal protein L41 mitochondrial
Humangene_id :	<a href="#">64975</a>
Humanswissprot_no :	<a href="#">Q8IXM3</a>
Mousegene_id :	<a href="#">107733</a>
Mouseswissprot_no :	<a href="#">Q9CQN7</a>
Ratgene_id :	<a href="#">296551</a>
Ratswissprot_no :	<a href="#">Q5BJX1</a>
Immunogen :	The antiserum was produced against synthesized peptide derived from human MRPL41. AA range:81-130
Specificity :	MRP-L41 Polyclonal Antibody detects endogenous levels of MRP-L41 protein.
Formulation :	Liquid in PBS containing 50% glycerol, 0.5% BSA and 0.02% sodium azide.
Source :	Rabbit
Dilution :	Western Blot: 1/500 - 1/2000. Immunohistochemistry: 1/100 - 1/300. ELISA: 1/40000. Not yet tested in other applications.
Purification :	The antibody was affinity-purified from rabbit antiserum by affinity-chromatography using epitope-specific immunogen.
Concentration :	1 mg/ml
Storage_stability :	-20°C/1 year
Msds :	MSDS_Antibody.pdf



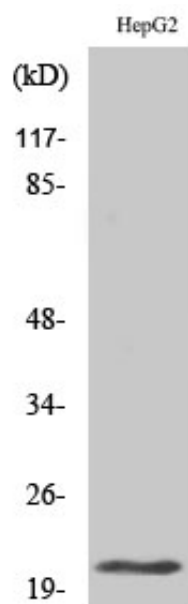
Other\_name : MRPL41; BMRP; MRPL27; RPML27; PIG3; 39S ribosomal protein L41; mitochondrial; L41mt; MRP-L41; 39S ribosomal protein L27 homolog; Bcl-2-interacting mitochondrial ribosomal protein L41; Cell proliferation-inducing gene 3 protein; MRP-L27 homo

---

Molecular Weight : 21KD

---

## Product Images



Western Blot analysis of various cells using MRP-L41 Polyclonal Antibody