

## MRP-L44 Polyclonal Antibody

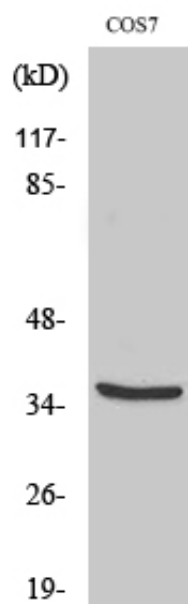
Catalog_no :	AT2864
Applications :	WB,IHC-p,IF,ELISA
Reactivity :	Human,Mouse,Rat,Monkey
Category :	抗原抗体
Size :	100µg/50µg/20µg
Gene_name :	MRPL44
Protein_name :	39S ribosomal protein L44 mitochondrial
Humangene_id :	<a href="#">65080</a>
Humanswissprot_no :	<a href="#">Q9H9J2</a>
Mousegene_id :	<a href="#">69163</a>
Mouseswissprot_no :	<a href="#">Q9CY73</a>
Immunogen :	The antiserum was produced against synthesized peptide derived from human MRPL44. AA range:221-270
Specificity :	MRP-L44 Polyclonal Antibody detects endogenous levels of MRP-L44 protein.
Formulation :	Liquid in PBS containing 50% glycerol, 0.5% BSA and 0.02% sodium azide.
Source :	Rabbit
Dilution :	Western Blot: 1/500 - 1/2000. Immunohistochemistry: 1/100 - 1/300. Immunofluorescence: 1/200 - 1/1000. ELISA: 1/40000. Not yet tested in other applications.
Purification :	The antibody was affinity-purified from rabbit antiserum by affinity-chromatography using epitope-specific immunogen.
Concentration :	1 mg/ml
Storage_stability :	-20°C/1 year
Msds :	<a href="#">MSDS_Antibody.pdf</a>
Other_name :	MRPL44; 39S ribosomal protein L44; mitochondrial; L44mt; MRP-L44
Molecular	36KD



Weight :

---

## Product Images



Western Blot analysis of various cells using MRP-L44 Polyclonal Antibody