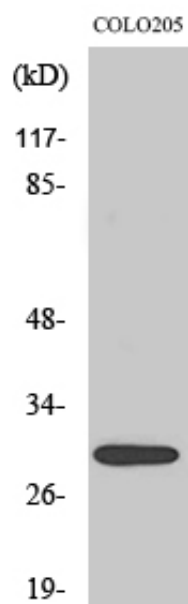


MRP-L9 Polyclonal Antibody

Catalog_no :	AT2873
Applications :	WB,ELISA
Reactivity :	Human
Category :	抗原抗体
Size :	100µg/50µg/20µg
Gene_name :	MRPL9
Protein_name :	39S ribosomal protein L9 mitochondrial
Humangene_id :	65005
Humanswissprot_no :	Q9BYD2
Immunogen :	The antiserum was produced against synthesized peptide derived from human MRPL9. AA range:211-260
Specificity :	MRP-L9 Polyclonal Antibody detects endogenous levels of MRP-L9 protein.
Formulation :	Liquid in PBS containing 50% glycerol, 0.5% BSA and 0.02% sodium azide.
Source :	Rabbit
Dilution :	Western Blot: 1/500 - 1/2000. ELISA: 1/40000. Not yet tested in other applications.
Purification :	The antibody was affinity-purified from rabbit antiserum by affinity-chromatography using epitope-specific immunogen.
Concentration :	1 mg/ml
Storage_stability :	-20°C/1 year
Msds :	MSDS_Antibody.pdf
Other_name :	MRPL9; 39S ribosomal protein L9; mitochondrial; L9mt; MRP-L9
Molecular Weight :	30KD

Product Images



Western Blot analysis of various cells using MRP-L9 Polyclonal Antibody