

MRP-S12 Polyclonal Antibody

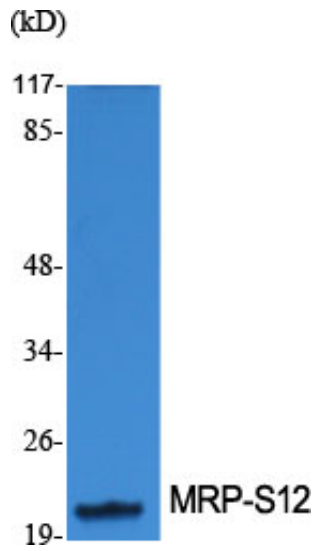
Catalog_no :	AT2874
Applications :	WB,ELISA
Reactivity :	Human,Mouse
Category :	抗原抗体
Size :	100µg/50µg/20µg
Gene_name :	MRPS12
Protein_name :	28S ribosomal protein S12 mitochondrial
Humangene_id :	6183
Humanswissprot_no :	O15235
Mousegene_id :	24030
Mouseswissprot_no :	O35680
Immunogen :	The antiserum was produced against synthesized peptide derived from human MRPS12. AA range:21-70
Specificity :	MRP-S12 Polyclonal Antibody detects endogenous levels of MRP-S12 protein.
Formulation :	Liquid in PBS containing 50% glycerol, 0.5% BSA and 0.02% sodium azide.
Source :	Rabbit
Dilution :	Western Blot: 1/500 - 1/2000. ELISA: 1/10000. Not yet tested in other applications.
Purification :	The antibody was affinity-purified from rabbit antiserum by affinity-chromatography using epitope-specific immunogen.
Concentration :	1 mg/ml
Storage_stability :	-20°C/1 year
Msds :	MSDS_Antibody.pdf
Other_name :	MRPS12; RPMS12; RPSM12; 28S ribosomal protein S12; mitochondrial; MRP-S12; S12mt; MT-RPS12
Molecular Weight :	20KD



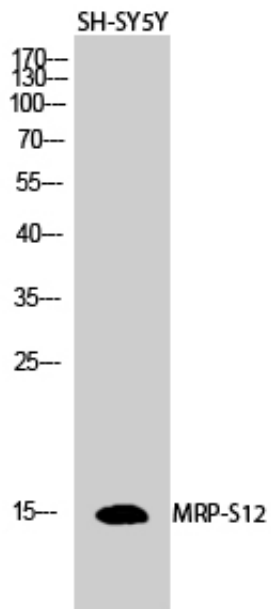
专注二抗产品

Biodragon旗下品牌

Product Images



Western Blot analysis of various cells using MRP-S12
Polyclonal Antibody diluted at 1 : 1000



Western Blot analysis of SH-SY5Y cells using MRP-S12
Polyclonal Antibody diluted at 1 : 1000