

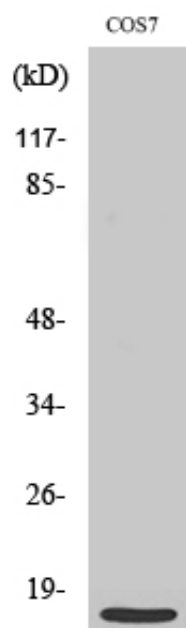
MRP-S21 Polyclonal Antibody

| | |
|---------------------|--|
| Catalog_no : | AT2880 |
| Applications : | WB,IHC-p,IF,ELISA |
| Reactivity : | Human,Mouse,Rat,Monkey |
| Category : | 抗原抗体 |
| Size : | 100µg/50µg/20µg |
| Gene_name : | MRPS21 |
| Protein_name : | 28S ribosomal protein S21 mitochondrial |
| Humangene_id : | 54460 |
| Humanswissprot_no : | P82921 |
| Mousegene_id : | 66292 |
| Mouseswissprot_no : | P58059 |
| Immunogen : | The antiserum was produced against synthesized peptide derived from human MRPS21. AA range:38-87 |
| Specificity : | MRP-S21 Polyclonal Antibody detects endogenous levels of MRP-S21 protein. |
| Formulation : | Liquid in PBS containing 50% glycerol, 0.5% BSA and 0.02% sodium azide. |
| Source : | Rabbit |
| Dilution : | Western Blot: 1/500 - 1/2000. Immunohistochemistry: 1/100 - 1/300. Immunofluorescence: 1/200 - 1/1000. ELISA: 1/40000. Not yet tested in other applications. |
| Purification : | The antibody was affinity-purified from rabbit antiserum by affinity-chromatography using epitope-specific immunogen. |
| Concentration : | 1 mg/ml |
| Storage_stability : | -20°C/1 year |
| Msds : | MSDS_Antibody.pdf |
| Other_name : | MRPS21; RPMS21; MDS016; 28S ribosomal protein S21; mitochondrial; MRP-S21; S21mt |
| Molecular | 11KD |



Weight :

Product Images



Western Blot analysis of various cells using MRP-S21
Polyclonal Antibody diluted at 1 : 500