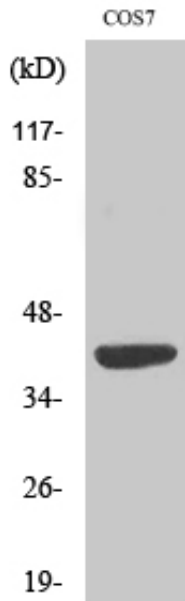


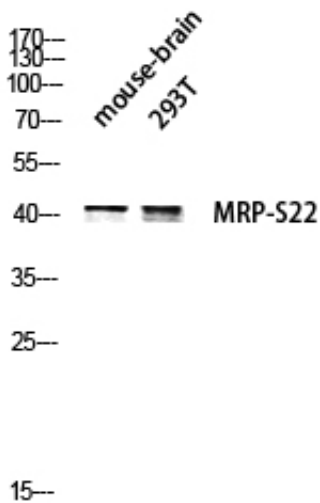
MRP-S22 Polyclonal Antibody

Catalog_no :	AT2881
Applications :	WB,IHC-p,IF,ELISA
Reactivity :	Human,Monkey
Category :	抗原抗体
Size :	100µg/50µg/20µg
Gene_name :	MRPS22
Protein_name :	28S ribosomal protein S22 mitochondrial
Humangene_id :	56945
Humanswissprot_no :	P82650
Immunogen :	The antiserum was produced against synthesized peptide derived from human MRPS22. AA range:231-280
Specificity :	MRP-S22 Polyclonal Antibody detects endogenous levels of MRP-S22 protein.
Formulation :	Liquid in PBS containing 50% glycerol, 0.5% BSA and 0.02% sodium azide.
Source :	Rabbit
Dilution :	Western Blot: 1/500 - 1/2000. Immunohistochemistry: 1/100 - 1/300. Immunofluorescence: 1/200 - 1/1000. ELISA: 1/40000. Not yet tested in other applications.
Purification :	The antibody was affinity-purified from rabbit antiserum by affinity-chromatography using epitope-specific immunogen.
Concentration :	1 mg/ml
Storage_stability :	-20°C/1 year
Msds :	MSDS_Antibody.pdf
Other_name :	MRPS22; C3orf5; RPMS22; GK002; 28S ribosomal protein S22; mitochondrial; MRP-S22; S22mt
Molecular Weight :	41KD

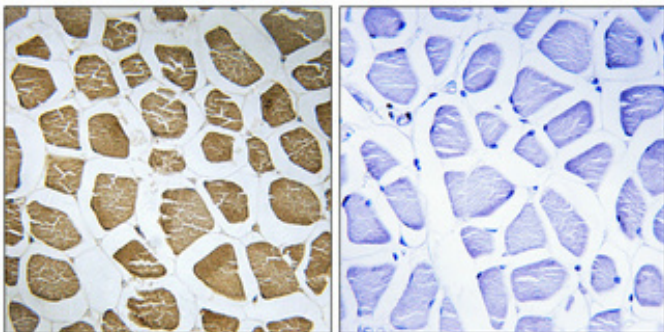
Product Images



Western Blot analysis of various cells using MRP-S22 Polyclonal Antibody



Western blot analysis of mouse-brain 293T lysis using MRP-S22 antibody.



Immunohistochemical analysis of paraffin-embedded Human skeletal muscle. Antibody was diluted at 1:100(4°, overnight). High-pressure and temperature Tris-EDTA, pH8.0 was used for antigen retrieval. Negative control (right) obtained from antibody was pre-absorbed by immunogen peptide.