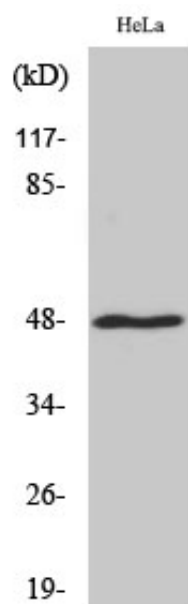


MRP-S27 Polyclonal Antibody

Catalog_no :	AT2884
Applications :	WB,ELISA
Reactivity :	Human
Category :	抗原抗体
Size :	100µg/50µg/20µg
Gene_name :	MRPS27
Protein_name :	28S ribosomal protein S27 mitochondrial
Humangene_id :	23107
Humanswissprot_no :	Q92552
Immunogen :	The antiserum was produced against synthesized peptide derived from human MRPS27. AA range:16-65
Specificity :	MRP-S27 Polyclonal Antibody detects endogenous levels of MRP-S27 protein.
Formulation :	Liquid in PBS containing 50% glycerol, 0.5% BSA and 0.02% sodium azide.
Source :	Rabbit
Dilution :	Western Blot: 1/500 - 1/2000. ELISA: 1/20000. Not yet tested in other applications.
Purification :	The antibody was affinity-purified from rabbit antiserum by affinity-chromatography using epitope-specific immunogen.
Concentration :	1 mg/ml
Storage_stability :	-20°C/1 year
Msds :	MSDS_Antibody.pdf
Other_name :	MRPS27; KIAA0264; 28S ribosomal protein S27; mitochondrial; MRP-S27; S27mt
Molecular Weight :	48KD

Product Images



Western Blot analysis of various cells using MRP-S27 Polyclonal Antibody