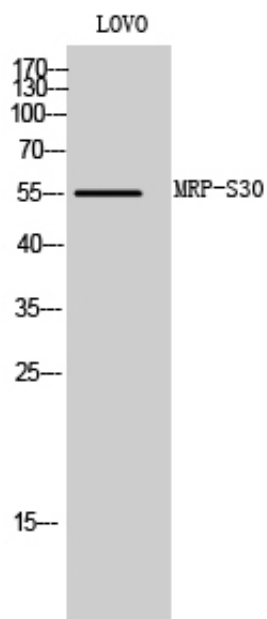




## MRP-S30 Polyclonal Antibody

Catalog_no :	AT2885
Applications :	WB,ELISA
Reactivity :	Human
Category :	抗原抗体
Size :	100µg/50µg/20µg
Gene_name :	MRPS30
Protein_name :	28S ribosomal protein S30 mitochondrial
Humangene_id :	<a href="#">10884</a>
Humanswissprot_no :	<a href="#">Q9NP92</a>
Immunogen :	The antiserum was produced against synthesized peptide derived from human MRPS30. AA range:390-439
Specificity :	MRP-S30 Polyclonal Antibody detects endogenous levels of MRP-S30 protein.
Formulation :	Liquid in PBS containing 50% glycerol, 0.5% BSA and 0.02% sodium azide.
Source :	Rabbit
Dilution :	Western Blot: 1/500 - 1/2000. ELISA: 1/10000. Not yet tested in other applications.
Purification :	The antibody was affinity-purified from rabbit antiserum by affinity-chromatography using epitope-specific immunogen.
Concentration :	1 mg/ml
Storage_stability :	-20°C/1 year
Msds :	MSDS_Antibody.pdf
Other_name :	MRPS30; PDCD9; BM-047; 28S ribosomal protein S30; mitochondrial; MRP-S30; S30mt; Programmed cell death protein 9
Molecular Weight :	55KD

## Product Images



Western Blot analysis of LOVO cells using MRP-S30 Polyclonal Antibody