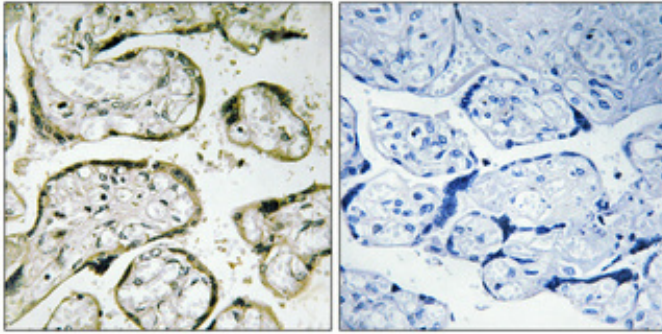


MRP-S32 Polyclonal Antibody

| | |
|---------------------|---|
| Catalog_no : | AT2886 |
| Applications : | IHC-p,ELISA |
| Reactivity : | Human |
| Category : | 抗原抗体 |
| Size : | 100µg/50µg/20µg |
| Gene_name : | MRPL42 |
| Protein_name : | 39S ribosomal protein L42 mitochondrial |
| Humangene_id : | 28977 |
| Humanswissprot_no : | Q9Y6G3 |
| Immunogen : | The antiserum was produced against synthesized peptide derived from human MRPS42. AA range:75-124 |
| Specificity : | MRP-S32 Polyclonal Antibody detects endogenous levels of MRP-S32 protein. |
| Formulation : | Liquid in PBS containing 50% glycerol, 0.5% BSA and 0.02% sodium azide. |
| Source : | Rabbit |
| Dilution : | Immunohistochemistry: 1/100 - 1/300. ELISA: 1/40000. Not yet tested in other applications. |
| Purification : | The antibody was affinity-purified from rabbit antiserum by affinity-chromatography using epitope-specific immunogen. |
| Concentration : | 1 mg/ml |
| Storage_stability : | -20°C/1 year |
| Msds : | MSDS_Antibody.pdf |
| Other_name : | MRPL42; MRPL31; MRPS32; RPML31; HSPC204; PTD007; 39S ribosomal protein L42; mitochondrial; L42mt; MRP-L42; 28S ribosomal protein S32, mitochondrial; MRP-S32; S32mt; 39S ribosomal protein L31, mitochondrial; L31mt; MRP-L31 |

Product Images



Immunohistochemical analysis of paraffin-embedded Human placenta. Antibody was diluted at 1:100(4°,overnight). High-pressure and temperature Tris-EDTA,pH8.0 was used for antigen retrieval. Negative contrl (right) obtaned from antibody was pre-absorbed by immunogen peptide.