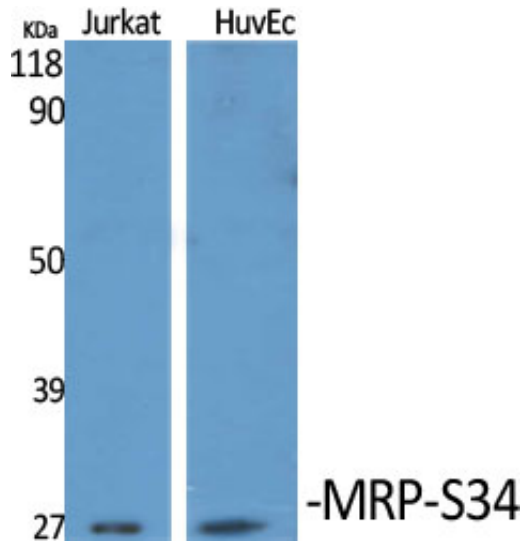




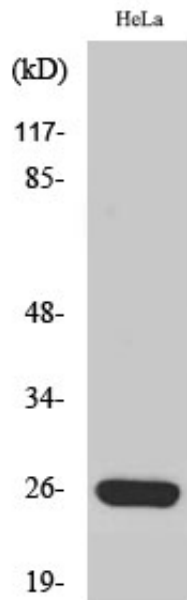
MRP-S34 Polyclonal Antibody

Catalog_no :	AT2888
Applications :	WB,ELISA
Reactivity :	Human,Mouse
Category :	抗原抗体
Size :	100µg/50µg/20µg
Gene_name :	MRPS34
Protein_name :	28S ribosomal protein S34 mitochondrial
Humangene_id :	65993
Humanswissprot_no :	P82930
Mousegene_id :	79044
Mouseswissprot_no :	Q9JIK9
Immunogen :	The antiserum was produced against synthesized peptide derived from human MRPS34. AA range:169-218
Specificity :	MRP-S34 Polyclonal Antibody detects endogenous levels of MRP-S34 protein.
Formulation :	Liquid in PBS containing 50% glycerol, 0.5% BSA and 0.02% sodium azide.
Source :	Rabbit
Dilution :	Western Blot: 1/500 - 1/2000. ELISA: 1/10000. Not yet tested in other applications.
Purification :	The antibody was affinity-purified from rabbit antiserum by affinity-chromatography using epitope-specific immunogen.
Concentration :	1 mg/ml
Storage_stability :	-20°C/1 year
Msds :	MSDS_Antibody.pdf
Other_name :	MRPS34; 28S ribosomal protein S34; mitochondrial; MRP-S34; S34mt
Molecular Weight :	26KD

Product Images



Western Blot analysis of various cells using MRP-S34 Polyclonal Antibody diluted at 1 : 1000



Western Blot analysis of Jurkat cells using MRP-S34 Polyclonal Antibody diluted at 1 : 1000