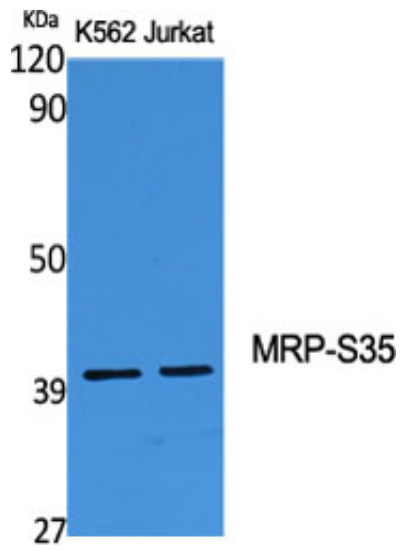


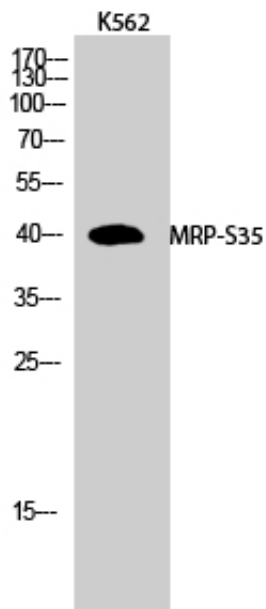
MRP-S35 Polyclonal Antibody

Catalog_no :	AT2889
Applications :	WB,IHC-p,ELISA
Reactivity :	Human
Category :	抗原抗体
Size :	100µg/50µg/20µg
Gene_name :	MRPS35
Protein_name :	28S ribosomal protein S35 mitochondrial
Humangene_id :	60488
Humanswissprot_no :	P82673
Immunogen :	The antiserum was produced against synthesized peptide derived from human MRPS35. AA range:211-260
Specificity :	MRP-S35 Polyclonal Antibody detects endogenous levels of MRP-S35 protein.
Formulation :	Liquid in PBS containing 50% glycerol, 0.5% BSA and 0.02% sodium azide.
Source :	Rabbit
Dilution :	Western Blot: 1/500 - 1/2000. Immunohistochemistry: 1/100 - 1/300. ELISA: 1/40000. Not yet tested in other applications.
Purification :	The antibody was affinity-purified from rabbit antiserum by affinity-chromatography using epitope-specific immunogen.
Concentration :	1 mg/ml
Storage_stability :	-20°C/1 year
Msds :	MSDS_Antibody.pdf
Other_name :	MRPS35; MRPS28; HDCMD11P; MDS023; PSEC0213; 28S ribosomal protein S35; mitochondrial; MRP-S35; S35mt; 28S ribosomal protein S28, mitochondrial; MRP-S28; S28mt
Molecular Weight :	40KD

Product Images



Western Blot analysis of various cells using MRP-S35 Polyclonal Antibody



Western Blot analysis of K562 cells using MRP-S35 Polyclonal Antibody