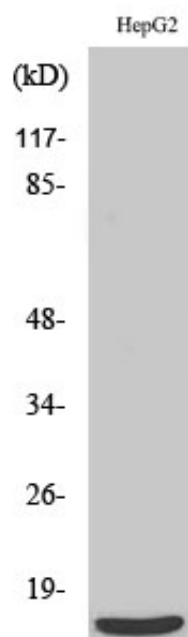




MRP-S36 Polyclonal Antibody

Catalog_no :	AT2890
Applications :	WB,IHC-p,ELISA
Reactivity :	Human
Category :	抗原抗体
Size :	100µg/50µg/20µg
Gene_name :	MRPS36
Protein_name :	28S ribosomal protein S36 mitochondrial
Humangene_id :	92259
Humanswissprot_no :	P82909
Immunogen :	The antiserum was produced against synthesized peptide derived from human MRPS36. AA range:4-53
Specificity :	MRP-S36 Polyclonal Antibody detects endogenous levels of MRP-S36 protein.
Formulation :	Liquid in PBS containing 50% glycerol, 0.5% BSA and 0.02% sodium azide.
Source :	Rabbit
Dilution :	Western Blot: 1/500 - 1/2000. Immunohistochemistry: 1/100 - 1/300. ELISA: 1/10000. Not yet tested in other applications.
Purification :	The antibody was affinity-purified from rabbit antiserum by affinity-chromatography using epitope-specific immunogen.
Concentration :	1 mg/ml
Storage_stability :	-20°C/1 year
Msds :	MSDS_Antibody.pdf
Other_name :	MRPS36; DC47; 28S ribosomal protein S36; mitochondrial; MRP-S36; S36mt
Molecular Weight :	15KD

Product Images



Western Blot analysis of various cells using MRP-S36 Polyclonal Antibody