



MRRF Polyclonal Antibody

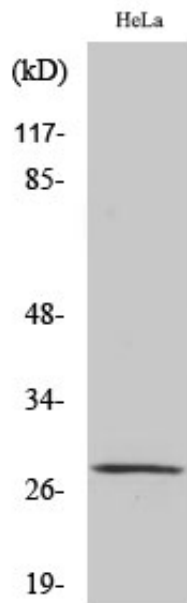
Catalog_no :	<u>AT2894</u>
Applications :	<u>WB,IHC-p,ELISA</u>
Reactivity :	<u>Human,Mouse,Rat</u>
Category :	<u>抗原抗体</u>
Size :	<u>100µg/50µg/20µg</u>
Gene_name :	<u>MRRF</u>
Protein_name :	<u>Ribosome-recycling factor mitochondrial</u>
Humangene_id :	<u>92399</u>
Humanswissprot_no :	<u>Q96E11</u>
Mousegene_id :	<u>67871</u>
Mouseswissprot_no :	<u>Q9D6S7</u>
Ratgene_id :	<u>311903</u>
Ratswissprot_no :	<u>Q5RKI9</u>
Immunogen :	<u>The antiserum was produced against synthesized peptide derived from human MRRF. AA range:181-230</u>
Specificity :	<u>MRRF Polyclonal Antibody detects endogenous levels of MRRF protein.</u>
Formulation :	<u>Liquid in PBS containing 50% glycerol, 0.5% BSA and 0.02% sodium azide.</u>
Source :	<u>Rabbit</u>
Dilution :	<u>Western Blot: 1/500 - 1/2000. Immunohistochemistry: 1/100 - 1/300. ELISA: 1/20000. Not yet tested in other applications.</u>
Purification :	<u>The antibody was affinity-purified from rabbit antiserum by affinity-chromatography using epitope-specific immunogen.</u>
Concentration :	<u>1 mg/ml</u>
Storage_stability :	<u>-20°C/1 year</u>
Msds :	<u>MSDS_Antibody.pdf</u>



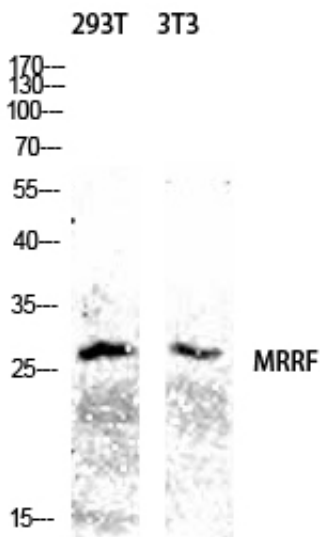
Other_name : MRRF; Ribosome-recycling factor; mitochondrial; RRF; Ribosome-releasing factor, mitochondrial

Molecular Weight : 28KD

Product Images



Western Blot analysis of various cells using MRRF Polyclonal Antibody diluted at 1 : 1000



Western blot analysis of 293T 3T3 lysis using MRRF antibody. Antibody was diluted at 1:1000