

## MRTF-A Polyclonal Antibody

Catalog_no :	AT2895
Applications :	WB,IHC-p,ELISA
Reactivity :	Human,Mouse
Category :	抗原抗体
Size :	100µg/50µg/20µg
Gene_name :	MKL1
Protein_name :	MKL/myocardin-like protein 1
Humangene_id :	<a href="#">57591</a>
Humanswissprot_no :	<a href="#">Q969V6</a>
Mousegene_id :	<a href="#">223701</a>
Mouseswissprot_no :	<a href="#">Q8K4J6</a>
Immunogen :	The antiserum was produced against synthesized peptide derived from human MKL1. AA range:10-59
Specificity :	MRTF-A Polyclonal Antibody detects endogenous levels of MRTF-A protein.
Formulation :	Liquid in PBS containing 50% glycerol, 0.5% BSA and 0.02% sodium azide.
Source :	Rabbit
Dilution :	Western Blot: 1/500 - 1/2000. Immunohistochemistry: 1/100 - 1/300. ELISA: 1/5000. Not yet tested in other applications.
Purification :	The antibody was affinity-purified from rabbit antiserum by affinity-chromatography using epitope-specific immunogen.
Concentration :	1 mg/ml
Storage_stability :	-20°C/1 year
Msds :	MSDS_Antibody.pdf
Other_name :	MKL1; KIAA1438; MAL; MKL/myocardin-like protein 1; Megakaryoblastic leukemia 1 protein; Megakaryocytic acute leukemia protein; Myocardin-related transcription factor A; MRTF-A

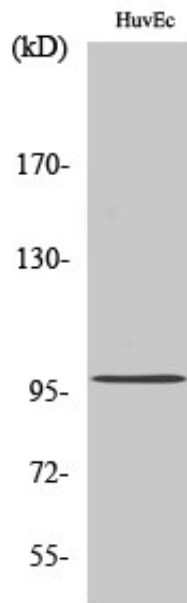


Molecular  
Weight :

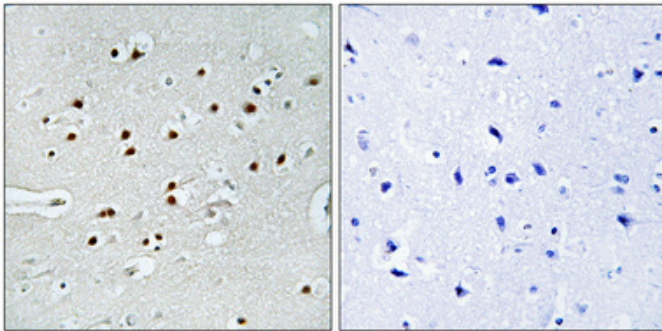
99KD

---

## Product Images



Western Blot analysis of various cells using MRTF-A Polyclonal Antibody



Immunohistochemical analysis of paraffin-embedded Human brain. Antibody was diluted at 1:100(4°,overnight). High-pressure and temperature Tris-EDTA,pH8.0 was used for antigen retrieval. Negative contrl (right) obtaned from antibody was pre-absorbed by immunogen peptide.