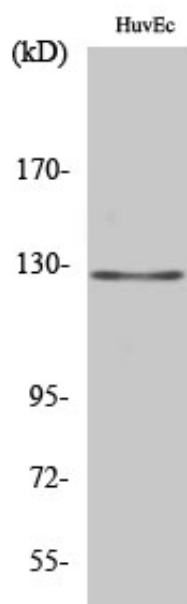


MSH3 Polyclonal Antibody

Catalog_no :	AT2897
Applications :	WB,IHC-p,ELISA
Reactivity :	Human
Category :	抗原抗体
Size :	100µg/50µg/20µg
Gene_name :	MSH3
Protein_name :	DNA mismatch repair protein Msh3
Humangene_id :	4437
Humanswissprot_no :	P20585
Immunogen :	The antiserum was produced against synthesized peptide derived from human MSH3. AA range:51-100
Specificity :	MSH3 Polyclonal Antibody detects endogenous levels of MSH3 protein.
Formulation :	Liquid in PBS containing 50% glycerol, 0.5% BSA and 0.02% sodium azide.
Source :	Rabbit
Dilution :	Western Blot: 1/500 - 1/2000. Immunohistochemistry: 1/100 - 1/300. ELISA: 1/20000. Not yet tested in other applications.
Purification :	The antibody was affinity-purified from rabbit antiserum by affinity-chromatography using epitope-specific immunogen.
Concentration :	1 mg/ml
Storage_stability :	-20°C/1 year
Msds :	MSDS_Antibody.pdf
Other_name :	MSH3; DUC1; DUG; DNA mismatch repair protein Msh3; hMSH3; Divergent upstream protein; DUP; Mismatch repair protein 1; MRP1
Molecular Weight :	127KD

Product Images



Western Blot analysis of various cells using MSH3 Polyclonal Antibody diluted at 1 : 2000 cells nucleus extracted by Minute TM Cytoplasmic and Nuclear Fractionation kit (SC-003, Invent biotech, MN, USA).