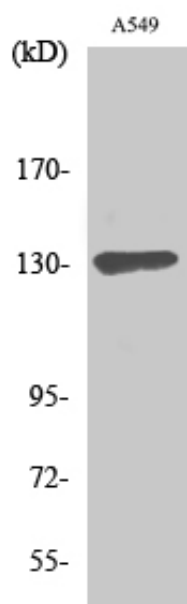




## Sin3B Polyclonal Antibody

Catalog_no :	AT2898
Applications :	WB,IF,ELISA
Reactivity :	Human
Category :	抗原抗体
Size :	100µg/50µg/20µg
Gene_name :	SIN3B
Protein_name :	Paired amphipathic helix protein Sin3b
Humangene_id :	<a href="#">23309</a>
Humanswissprot_no :	<a href="#">O75182</a>
Immunogen :	The antiserum was produced against synthesized peptide derived from human SIN3B. AA range:221-270
Specificity :	Sin3B Polyclonal Antibody detects endogenous levels of Sin3B protein.
Formulation :	Liquid in PBS containing 50% glycerol, 0.5% BSA and 0.02% sodium azide.
Source :	Rabbit
Dilution :	Western Blot: 1/500 - 1/2000. Immunofluorescence: 1/200 - 1/1000. ELISA: 1/10000. Not yet tested in other applications.
Purification :	The antibody was affinity-purified from rabbit antiserum by affinity-chromatography using epitope-specific immunogen.
Concentration :	1 mg/ml
Storage_stability :	-20°C/1 year
Msds :	MSDS_Antibody.pdf
Other_name :	SIN3B; KIAA0700; Paired amphipathic helix protein Sin3b; Histone deacetylase complex subunit Sin3b; Transcriptional corepressor Sin3b
Molecular Weight :	130KD

## Product Images



Western Blot analysis of various cells using Sin3B Polyclonal Antibody