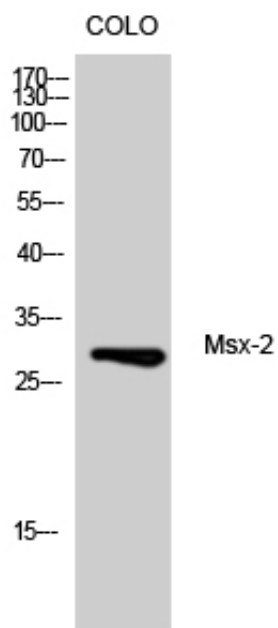




Msx-2 Polyclonal Antibody

Catalog_no :	AT2905
Applications :	WB,IHC-p,ELISA
Reactivity :	Human,Mouse
Category :	抗原抗体
Size :	100µg/50µg/20µg
Gene_name :	MSX2
Protein_name :	Homeobox protein MSX-2
Humangene_id :	4488
Humanswissprot_no :	P35548
Mousegene_id :	17702
Mouseswissprot_no :	Q03358
Immunogen :	Synthesized peptide derived from the Internal region of human Msx-2.
Specificity :	Msx-2 Polyclonal Antibody detects endogenous levels of Msx-2 protein.
Formulation :	Liquid in PBS containing 50% glycerol, 0.5% BSA and 0.02% sodium azide.
Source :	Rabbit
Dilution :	Western Blot: 1/500 - 1/2000. Immunohistochemistry: 1/100 - 1/300. ELISA: 1/20000. Not yet tested in other applications.
Purification :	The antibody was affinity-purified from rabbit antiserum by affinity-chromatography using epitope-specific immunogen.
Concentration :	1 mg/ml
Storage_stability :	-20°C/1 year
Msd_s :	MSDS_Antibody.pdf
Other_name :	MSX2; HOX8; Homeobox protein MSX-2; Homeobox protein Hox-8
Molecular Weight :	28KD

Product Images



Western Blot analysis of CoLo cells using Msx-2 Polyclonal Antibody