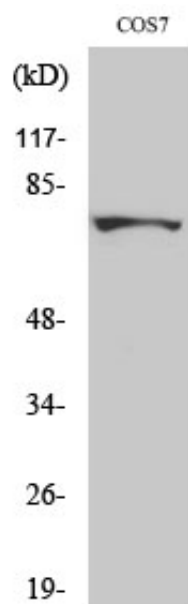




## MTHFR Polyclonal Antibody

Catalog_no :	AT2909
Applications :	WB,ELISA
Reactivity :	Human,Mouse,Monkey
Category :	抗原抗体
Size :	100µg/50µg/20µg
Gene_name :	MTHFR
Protein_name :	Methylenetetrahydrofolate reductase
Humangene_id	<a href="#">4524</a>
:	
Humanswissprot	<a href="#">P42898</a>
_no :	
Mousegene_id :	<a href="#">17769</a>
Mouseswissprot	<a href="#">Q9WU20</a>
_no :	
Immunogen :	The antiserum was produced against synthesized peptide derived from human MTHFR. AA range:314-363
Specificity :	MTHFR Polyclonal Antibody detects endogenous levels of MTHFR protein.
Formulation :	Liquid in PBS containing 50% glycerol, 0.5% BSA and 0.02% sodium azide.
Source :	Rabbit
Dilution :	Western Blot: 1/500 - 1/2000. ELISA: 1/10000. Not yet tested in other applications.
Purification :	The antibody was affinity-purified from rabbit antiserum by affinity-chromatography using epitope-specific immunogen.
Concentration :	1 mg/ml
Storage_stability	-20°C/1 year
:	
Msds :	MSDS_Antibody.pdf
Other_name :	MTHFR; Methylenetetrahydrofolate reductase
Molecular Weight :	75KD

## Product Images



Western Blot analysis of various cells using MTHFR Polyclonal Antibody