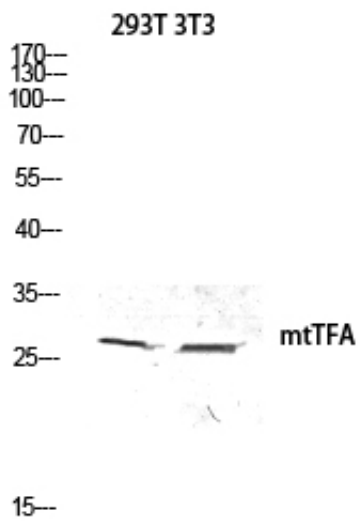


mtTFA Polyclonal Antibody

Catalog_no :	AT2916
Applications :	WB,IHC-p,IF,ELISA
Reactivity :	Human
Category :	抗原抗体
Size :	100µg/50µg/20µg
Gene_name :	TFAM
Protein_name :	Transcription factor A mitochondrial
Humangene_id :	7019
Humanswissprot_no :	Q00059
Immunogen :	The antiserum was produced against synthesized peptide derived from human TFAM. AA range:131-180
Specificity :	mtTFA Polyclonal Antibody detects endogenous levels of mtTFA protein.
Formulation :	Liquid in PBS containing 50% glycerol, 0.5% BSA and 0.02% sodium azide.
Source :	Rabbit
Dilution :	Immunohistochemistry: 1/100 - 1/300. Immunofluorescence: 1/200 - 1/1000. ELISA: 1/20000. Not yet tested in other applications.
Purification :	The antibody was affinity-purified from rabbit antiserum by affinity-chromatography using epitope-specific immunogen.
Concentration :	1 mg/ml
Storage_stability :	-20°C/1 year
Msds :	MSDS_Antibody.pdf
Other_name :	TFAM; TCF6; TCF6L2; Transcription factor A; mitochondrial; mtTFA; Mitochondrial transcription factor 1; MtTF1; Transcription factor 6; TCF-6; Transcription factor 6-like 2

Product Images



Western blot analysis of 293T 3T3 lysis using mtTFA antibody. Antibody was diluted at 1:500