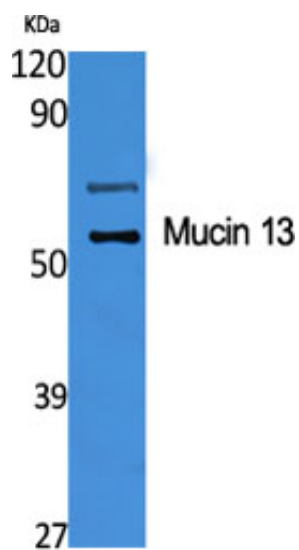




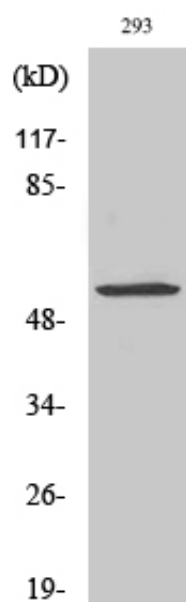
Mucin 13 Polyclonal Antibody

Catalog_no :	AT2921
Applications :	WB,IHC-p,IF,ELISA
Reactivity :	Human
Category :	抗原抗体
Size :	100µg/50µg/20µg
Gene_name :	MUC13
Protein_name :	Mucin-13
Humangene_id :	56667
Humanswissprot_no :	Q9H3R2
Immunogen :	The antiserum was produced against synthesized peptide derived from human MUC13. AA range:421-470
Specificity :	Mucin 13 Polyclonal Antibody detects endogenous levels of Mucin 13 protein.
Formulation :	Liquid in PBS containing 50% glycerol, 0.5% BSA and 0.02% sodium azide.
Source :	Rabbit
Dilution :	Western Blot: 1/500 - 1/2000. Immunohistochemistry: 1/100 - 1/300. Immunofluorescence: 1/200 - 1/1000. ELISA: 1/20000. Not yet tested in other applications.
Purification :	The antibody was affinity-purified from rabbit antiserum by affinity-chromatography using epitope-specific immunogen.
Concentration :	1 mg/ml
Storage_stability :	-20°C/1 year
Msds :	MSDS_Antibody.pdf
Other_name :	MUC13; DRCC1; RECC; Mucin-13; MUC-13; Down-regulated in colon cancer 1
Molecular Weight :	50KD

Product Images



Western Blot analysis of various cells using Mucin 13 Polyclonal Antibody diluted at 1 : 1000



Western Blot analysis of COLO205 cells using Mucin 13 Polyclonal Antibody diluted at 1 : 1000