

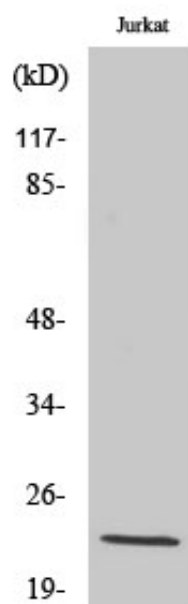
Musculin Polyclonal Antibody

Catalog_no :	AT2923
Applications :	WB,IHC-p,ELISA
Reactivity :	Human,Mouse
Category :	抗原抗体
Size :	100µg/50µg/20µg
Gene_name :	MSC
Protein_name :	Musculin
Humangene_id :	9242
Humanswissprot_no :	O60682
Mousegene_id :	17681
Mouseswissprot_no :	O88940
Immunogen :	The antiserum was produced against synthesized peptide derived from human Musculin. AA range:131-180
Specificity :	Musculin Polyclonal Antibody detects endogenous levels of Musculin protein.
Formulation :	Liquid in PBS containing 50% glycerol, 0.5% BSA and 0.02% sodium azide.
Source :	Rabbit
Dilution :	Western Blot: 1/500 - 1/2000. Immunohistochemistry: 1/100 - 1/300. ELISA: 1/10000. Not yet tested in other applications.
Purification :	The antibody was affinity-purified from rabbit antiserum by affinity-chromatography using epitope-specific immunogen.
Concentration :	1 mg/ml
Storage_stability :	-20°C/1 year
Msds :	MSDS_Antibody.pdf
Other_name :	MSC; ABF1; BHLHA22; Musculin; Activated B-cell factor 1; ABF-1; Class A basic helix-loop-helix protein 22; bHLHa22
Molecular	22KD



Weight :

Product Images



Western Blot analysis of various cells using Musculin Polyclonal Antibody diluted at 1 : 2000 cells nucleus extracted by Minute TM Cytoplasmic and Nuclear Fractionation kit (SC-003, Inventbiotech, MN, USA).