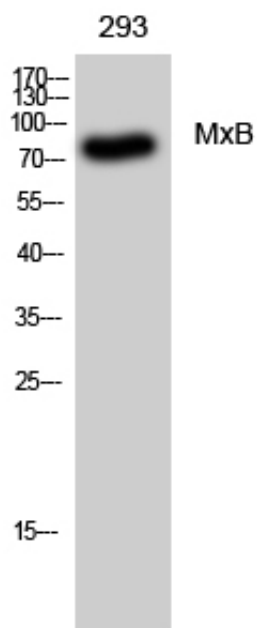




MxB Polyclonal Antibody

Catalog_no :	AT2925
Applications :	WB,ELISA
Reactivity :	Human
Category :	抗原抗体
Size :	100µg/50µg/20µg
Gene_name :	MX2
Protein_name :	Interferon-induced GTP-binding protein Mx2
Humangene_id :	4600
Humanswissprot_no :	P20592
Immunogen :	Synthesized peptide derived from the Internal region of human MxB.
Specificity :	MxB Polyclonal Antibody detects endogenous levels of MxB protein.
Formulation :	Liquid in PBS containing 50% glycerol, 0.5% BSA and 0.02% sodium azide.
Source :	Rabbit
Dilution :	Western Blot: 1/500 - 1/2000. ELISA: 1/20000. Not yet tested in other applications.
Purification :	The antibody was affinity-purified from rabbit antiserum by affinity-chromatography using epitope-specific immunogen.
Concentration :	1 mg/ml
Storage_stability :	-20°C/1 year
Msds :	MSDS_Antibody.pdf
Other_name :	MX2; Interferon-induced GTP-binding protein Mx2; Interferon-regulated resistance GTP-binding protein MxB; Myxovirus resistance protein 2; p78-related protein
Molecular Weight :	82KD

Product Images



Western Blot analysis of 293 cells using MxB Polyclonal Antibody