

## MYBPC1 Polyclonal Antibody

Catalog_no :	AT2926
Applications :	WB,ELISA
Reactivity :	Human,Mouse,Rat
Category :	抗原抗体
Size :	100µg/50µg/20µg
Gene_name :	MYBPC1
Protein_name :	Myosin-binding protein C slow-type
Humangene_id :	<a href="#">4604</a>
Humanswissprot_no :	<a href="#">Q00872</a>
Ratgene_id :	<a href="#">362867</a>
Ratswissprot_no :	<a href="#">Q63518</a>
Immunogen :	The antiserum was produced against synthesized peptide derived from human MYBPC1. AA range:218-267
Specificity :	MYBPC1 Polyclonal Antibody detects endogenous levels of MYBPC1 protein.
Formulation :	Liquid in PBS containing 50% glycerol, 0.5% BSA and 0.02% sodium azide.
Source :	Rabbit
Dilution :	Western Blot: 1/500 - 1/2000. ELISA: 1/20000. Not yet tested in other applications.
Purification :	The antibody was affinity-purified from rabbit antiserum by affinity-chromatography using epitope-specific immunogen.
Concentration :	1 mg/ml
Storage_stability :	-20°C/1 year
Msds :	MSDS_Antibody.pdf
Other_name :	MYBPC1; MYBPCS; Myosin-binding protein C; slow-type; Slow MyBP-C; C-protein, skeletal muscle slow isoform
Molecular Weight :	120KD

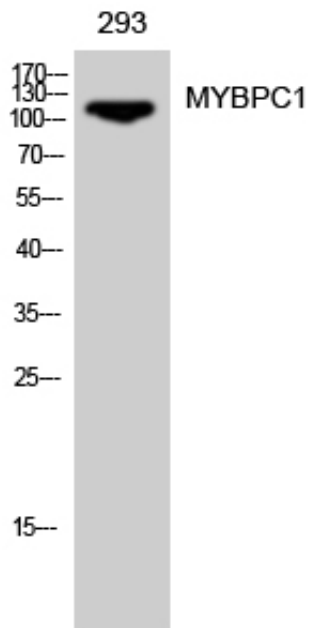


**专注二抗产品**

Biodragon旗下品牌

---

## Product Images



Western Blot analysis of 293 cells using MYBPC1  
Polyclonal Antibody diluted at 1 : 500