

Myf-6 Polyclonal Antibody

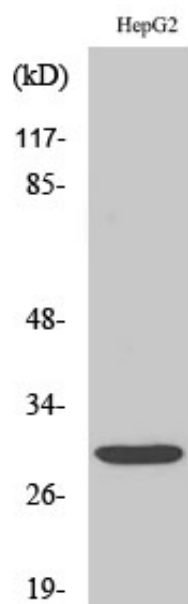
Catalog_no :	AT2931
Applications :	WB,IHC-p,ELISA
Reactivity :	Human,Mouse,Rat
Category :	抗原抗体
Size :	100µg/50µg/20µg
Gene_name :	MYF6
Protein_name :	Myogenic factor 6
Humangene_id :	4618
Humanswissprot_no :	P23409
Mousegene_id :	17878
Mouseswissprot_no :	P15375
Ratgene_id :	25714
Ratswissprot_no :	P19335
Immunogen :	The antiserum was produced against synthesized peptide derived from human MYF6. AA range:116-165
Specificity :	Myf-6 Polyclonal Antibody detects endogenous levels of Myf-6 protein.
Formulation :	Liquid in PBS containing 50% glycerol, 0.5% BSA and 0.02% sodium azide.
Source :	Rabbit
Dilution :	Western Blot: 1/500 - 1/2000. Immunohistochemistry: 1/100 - 1/300. ELISA: 1/20000. Not yet tested in other applications.
Purification :	The antibody was affinity-purified from rabbit antiserum by affinity-chromatography using epitope-specific immunogen.
Concentration :	1 mg/ml
Storage_stability :	-20°C/1 year
Msds :	MSDS_Antibody.pdf



Other_name : MYF6; BHLHC4; MRF4; Myogenic factor 6; Myf-6; Class C basic helix-loop-helix protein 4; bHLHc4; Muscle-specific regulatory factor 4

Molecular Weight : 26KD

Product Images



Western Blot analysis of various cells using Myf-6 Polyclonal Antibody diluted at 1 : 2000 cells nucleus extracted by Minute TM Cytoplasmic and Nuclear Fractionation kit (SC-003, Inventbiotech, MN, USA).