



MYH Polyclonal Antibody

Catalog_no :	AT2932
Applications :	WB,IHC-p,IF,ELISA
Reactivity :	Human,Mouse,Rat
Category :	抗原抗体
Size :	100µg/50µg/20µg
Gene_name :	MUTYH
Protein_name :	A/G-specific adenine DNA glycosylase
Humangene_id	4595
:	
Humanswissprot	Q9UIF7
_no :	
Mousegene_id :	70603
Mouseswissprot	Q99P21
_no :	
Ratgene_id :	170841
Ratswissprot_no	Q8R5G2
:	
Immunogen :	The antiserum was produced against synthesized peptide derived from human MUTYH. AA range:151-200
Specificity :	MYH Polyclonal Antibody detects endogenous levels of MYH protein.
Formulation :	Liquid in PBS containing 50% glycerol, 0.5% BSA and 0.02% sodium azide.
Source :	Rabbit
Dilution :	Western Blot: 1/500 - 1/2000. Immunohistochemistry: 1/100 - 1/300. Immunofluorescence: 1/200 - 1/1000. ELISA: 1/10000. Not yet tested in other applications.
Purification :	The antibody was affinity-purified from rabbit antiserum by affinity-chromatography using epitope-specific immunogen.
Concentration :	1 mg/ml
Storage_stability	-20°C/1 year
:	

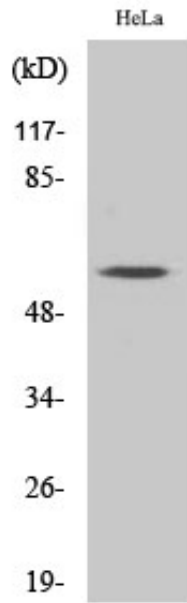


MsdS : MSDS_Antibody.pdf

Other_name : MUTYH; MYH; A/G-specific adenine DNA glycosylase; MutY homolog; hMYH

Molecular Weight : 60KD

Product Images



Western Blot analysis of various cells using MYH Polyclonal Antibody diluted at 1 : 1000 cells nucleus extracted by Minute TM Cytoplasmic and Nuclear Fractionation kit (SC-003, Invent biotech, MN, USA).