

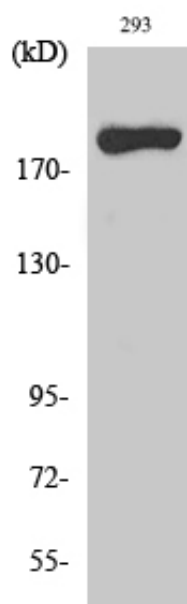
MYH14 Polyclonal Antibody

Catalog_no :	AT2933
Applications :	WB,IHC-p,ELISA
Reactivity :	Human,Mouse
Category :	抗原抗体
Size :	100µg/50µg/20µg
Gene_name :	MYH14
Protein_name :	Myosin-14
Humangene_id :	79784
Humanswissprot_no :	Q7Z406
Mousegene_id :	71960
Mouseswissprot_no :	Q6URW6
Immunogen :	The antiserum was produced against synthesized peptide derived from human MYH14. AA range:1051-1100
Specificity :	MYH14 Polyclonal Antibody detects endogenous levels of MYH14 protein.
Formulation :	Liquid in PBS containing 50% glycerol, 0.5% BSA and 0.02% sodium azide.
Source :	Rabbit
Dilution :	Western Blot: 1/500 - 1/2000. Immunohistochemistry: 1/100 - 1/300. ELISA: 1/5000. Not yet tested in other applications.
Purification :	The antibody was affinity-purified from rabbit antiserum by affinity-chromatography using epitope-specific immunogen.
Concentration :	1 mg/ml
Storage_stability :	-20°C/1 year
Msds :	MSDS_Antibody.pdf
Other_name :	MYH14; KIAA2034; FP17425; Myosin-14; Myosin heavy chain 14; Myosin heavy chain; non-muscle IIC; Non-muscle myosin heavy chain IIC; NMHC II-C
Molecular	228KD



Weight :

Product Images



Western Blot analysis of various cells using MYH14 Polyclonal Antibody diluted at 1 : 1000