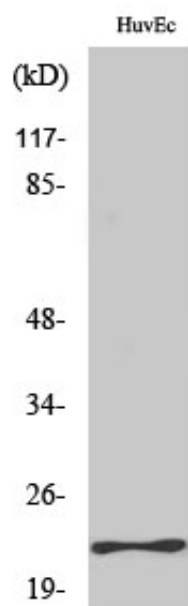


## MYL3 Polyclonal Antibody

Catalog_no :	AT2936
Applications :	WB,ELISA
Reactivity :	Human
Category :	抗原抗体
Size :	100µg/50µg/20µg
Gene_name :	MYL3
Protein_name :	Myosin light chain 3
Humangene_id :	<a href="#">4634</a>
Humanswissprot_no :	<a href="#">P08590</a>
Immunogen :	The antiserum was produced against synthesized peptide derived from human MYL3. AA range:71-120
Specificity :	MYL3 Polyclonal Antibody detects endogenous levels of MYL3 protein.
Formulation :	Liquid in PBS containing 50% glycerol, 0.5% BSA and 0.02% sodium azide.
Source :	Rabbit
Dilution :	Western Blot: 1/500 - 1/2000. ELISA: 1/20000. Not yet tested in other applications.
Purification :	The antibody was affinity-purified from rabbit antiserum by affinity-chromatography using epitope-specific immunogen.
Concentration :	1 mg/ml
Storage_stability :	-20°C/1 year
Msds :	MSDS_Antibody.pdf
Other_name :	MYL3; Myosin light chain 3; Cardiac myosin light chain 1; CMLC1; Myosin light chain 1; slow-twitch muscle B/ventricular isoform; MLC1SB; Ventricular/slow twitch myosin alkali light chain
Molecular Weight :	22KD

## Product Images



Western Blot analysis of various cells using MYL3 Polyclonal Antibody