

MYLIP Polyclonal Antibody

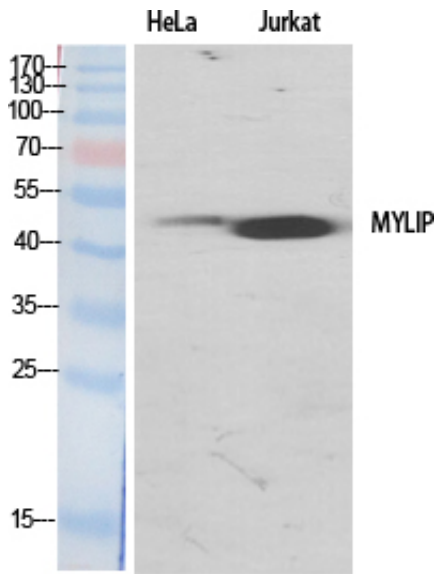
Catalog_no :	AT2939
Applications :	WB,IHC-p,ELISA
Reactivity :	Human,Mouse,Rat
Category :	抗原抗体
Size :	100µg/50µg/20µg
Gene_name :	MYLIP
Protein_name :	E3 ubiquitin-protein ligase MYLIP
Humangene_id :	29116
Humanswissprot_no :	Q8WY64
Mousegene_id :	218203
Mouseswissprot_no :	Q8BM54
Ratgene_id :	306825
Ratswissprot_no :	D3ZDI6
Immunogen :	The antiserum was produced against synthesized peptide derived from human MYLIP. AA range:161-210
Specificity :	MYLIP Polyclonal Antibody detects endogenous levels of MYLIP protein.
Formulation :	Liquid in PBS containing 50% glycerol, 0.5% BSA and 0.02% sodium azide.
Source :	Rabbit
Dilution :	Western Blot: 1/500 - 1/2000. Immunohistochemistry: 1/100 - 1/300. ELISA: 1/20000. Not yet tested in other applications.
Purification :	The antibody was affinity-purified from rabbit antiserum by affinity-chromatography using epitope-specific immunogen.
Concentration :	1 mg/ml
Storage_stability :	-20°C/1 year
Msds :	MSDS_Antibody.pdf



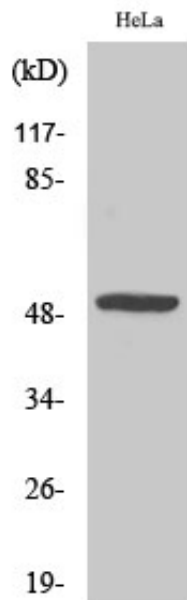
Other_name : MYLIP; BZF1; IDOL; BM-023; PP5242; E3 ubiquitin-protein ligase MYLIP; Inducible degrader of the LDL-receptor; Idol; Myosin regulatory light chain interacting protein; MIR

Molecular Weight : 50KD

Product Images



Western Blot analysis of various cells using MYLIP Polyclonal Antibody



Western Blot analysis of Jurkat cells using MYLIP Polyclonal Antibody