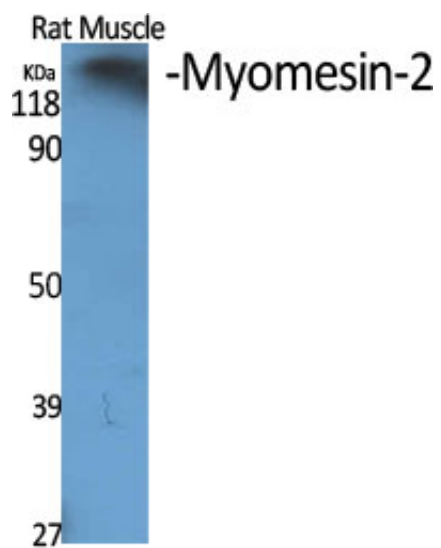




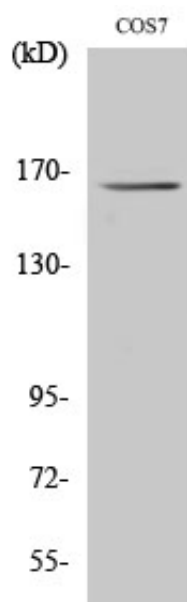
## Myomesin-2 Polyclonal Antibody

Catalog_no :	AT2947
Applications :	WB,ELISA
Reactivity :	Human,Mouse,Monkey
Category :	抗原抗体
Size :	100µg/50µg/20µg
Gene_name :	MYOM2
Protein_name :	Myomesin-2
Humangene_id :	<a href="#">9172</a>
Humanswissprot_no :	<a href="#">P54296</a>
Immunogen :	The antiserum was produced against synthesized peptide derived from human MYOM2. AA range:612-661
Specificity :	Myomesin-2 Polyclonal Antibody detects endogenous levels of Myomesin-2 protein.
Formulation :	Liquid in PBS containing 50% glycerol, 0.5% BSA and 0.02% sodium azide.
Source :	Rabbit
Dilution :	Western Blot: 1/500 - 1/2000. ELISA: 1/40000. Not yet tested in other applications.
Purification :	The antibody was affinity-purified from rabbit antiserum by affinity-chromatography using epitope-specific immunogen.
Concentration :	1 mg/ml
Storage_stability :	-20°C/1 year
Msds :	MSDS_Antibody.pdf
Other_name :	MYOM2; Myomesin-2; 165 kDa connectin-associated protein; 165 kDa titin-associated protein; M-protein; Myomesin family member 2
Molecular Weight :	165KD

## Product Images



Western Blot analysis of various cells using Myomesin-2 Polyclonal Antibody diluted at 1 : 500



Western Blot analysis of HT29 cells using Myomesin-2 Polyclonal Antibody diluted at 1 : 500