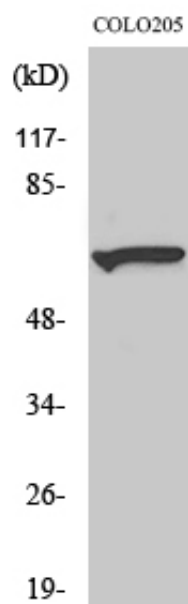




Myotubularin Polyclonal Antibody

Catalog_no :	AT2952
Applications :	WB,ELISA
Reactivity :	Human,Mouse
Category :	抗原抗体
Size :	100µg/50µg/20µg
Gene_name :	MTM1
Protein_name :	Myotubularin
Humangene_id	4534
:	
Humanswissprot	Q13496
_no :	
Mousegene_id :	17772
Mouseswissprot	Q9Z2C5
_no :	
Immunogen :	The antiserum was produced against synthesized peptide derived from human Myotubularin. AA range:241-290
Specificity :	Myotubularin Polyclonal Antibody detects endogenous levels of Myotubularin protein.
Formulation :	Liquid in PBS containing 50% glycerol, 0.5% BSA and 0.02% sodium azide.
Source :	Rabbit
Dilution :	Western Blot: 1/500 - 1/2000. ELISA: 1/10000. Not yet tested in other applications.
Purification :	The antibody was affinity-purified from rabbit antiserum by affinity-chromatography using epitope-specific immunogen.
Concentration :	1 mg/ml
Storage_stability	-20°C/1 year
:	
Msds :	MSDS_Antibody.pdf
Other_name :	MTM1; CG2; Myotubularin
Molecular Weight :	70KD

Product Images



Western Blot analysis of various cells using
Myotubularin Polyclonal Antibody diluted at 1 : 500