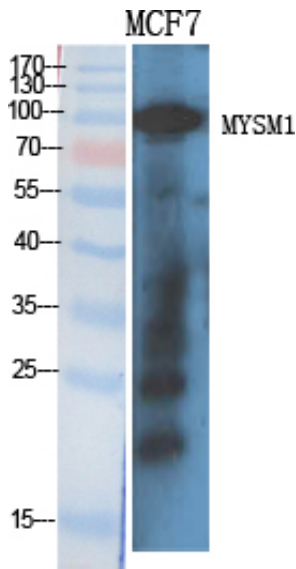




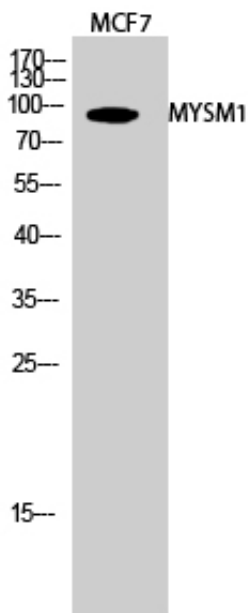
MYSM1 Polyclonal Antibody

Catalog_no :	AT2957
Applications :	WB,IHC-p,ELISA
Reactivity :	Human
Category :	抗原抗体
Size :	100µg/50µg/20µg
Gene_name :	MYSM1
Protein_name :	Histone H2A deubiquitinase MYSM1
Humangene_id :	114803
Humanswissprot_no :	Q5VWJ2
Immunogen :	The antiserum was produced against synthesized peptide derived from human MYSM1. AA range:520-569
Specificity :	MYSM1 Polyclonal Antibody detects endogenous levels of MYSM1 protein.
Formulation :	Liquid in PBS containing 50% glycerol, 0.5% BSA and 0.02% sodium azide.
Source :	Rabbit
Dilution :	Western Blot: 1/500 - 1/2000. Immunohistochemistry: 1/100 - 1/300. ELISA: 1/40000. Not yet tested in other applications.
Purification :	The antibody was affinity-purified from rabbit antiserum by affinity-chromatography using epitope-specific immunogen.
Concentration :	1 mg/ml
Storage_stability :	-20°C/1 year
Msds :	MSDS_Antibody.pdf
Other_name :	MYSM1; KIAA1915; Histone H2A deubiquitinase MYSM1; 2A-DUB; Myb-like; SWIRM and MPN domain-containing protein 1
Molecular Weight :	95KD

Product Images



Western Blot analysis of various cells using MYSM1 Polyclonal Antibody diluted at 1 : 2000 cells nucleus extracted by Minute TM Cytoplasmic and Nuclear Fractionation kit (SC-003, Inventbiotech, MN, USA).



Western Blot analysis of MCF7 cells using MYSM1 Polyclonal Antibody diluted at 1 : 2000 cells nucleus extracted by Minute TM Cytoplasmic and Nuclear Fractionation kit (SC-003, Inventbiotech, MN, USA).

Western blot analysis of Hela lysis using MYSM1 antibody. Antibody was diluted at 1:2000 cells nucleus extracted by Minute TM Cytoplasmic and Nuclear Fractionation kit (SC-003, Inventbiotech, MN, USA).

