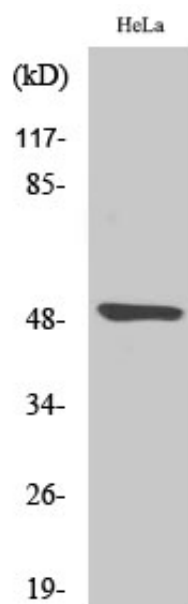




## Myt 1 Polyclonal Antibody

Catalog_no :	AT2958
Applications :	WB,IHC-p,ELISA
Reactivity :	Human
Category :	抗原抗体
Size :	100µg/50µg/20µg
Gene_name :	PKMYT1
Protein_name :	Membrane-associated tyrosine- and threonine-specific cdc2-inhibitory kinase
Humangene_id :	<a href="#">9088</a>
Humanswissprot_no :	<a href="#">Q99640</a>
Immunogen :	The antiserum was produced against synthesized peptide derived from human PKMYT1. AA range:49-98
Specificity :	Myt 1 Polyclonal Antibody detects endogenous levels of Myt 1 protein.
Formulation :	Liquid in PBS containing 50% glycerol, 0.5% BSA and 0.02% sodium azide.
Source :	Rabbit
Dilution :	Western Blot: 1/500 - 1/2000. Immunohistochemistry: 1/100 - 1/300. ELISA: 1/20000. Not yet tested in other applications.
Purification :	The antibody was affinity-purified from rabbit antiserum by affinity-chromatography using epitope-specific immunogen.
Concentration :	1 mg/ml
Storage_stability :	-20°C/1 year
Msds :	MSDS_Antibody.pdf
Other_name :	PKMYT1; MYT1; Membrane-associated tyrosine- and threonine-specific cdc2-inhibitory kinase; Myt1 kinase
Molecular Weight :	50KD

## Product Images



Western Blot analysis of various cells using Myt 1 Polyclonal Antibody diluted at 1 : 2000