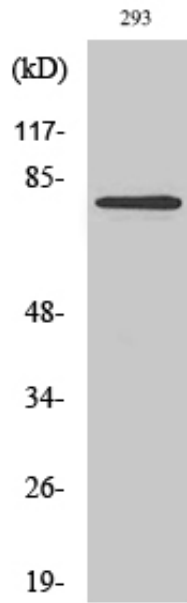


## MZF-1 Polyclonal Antibody

Catalog_no :	AT2959
Applications :	WB,IHC-p,ELISA
Reactivity :	Human
Category :	抗原抗体
Size :	100µg/50µg/20µg
Gene_name :	MZF1
Protein_name :	Myeloid zinc finger 1
Humangene_id :	<a href="#">7593</a>
Humanswissprot_no :	<a href="#">P28698</a>
Immunogen :	The antiserum was produced against synthesized peptide derived from human MZF-1. AA range:1-50
Specificity :	MZF-1 Polyclonal Antibody detects endogenous levels of MZF-1 protein.
Formulation :	Liquid in PBS containing 50% glycerol, 0.5% BSA and 0.02% sodium azide.
Source :	Rabbit
Dilution :	Western Blot: 1/500 - 1/2000. Immunohistochemistry: 1/100 - 1/300. ELISA: 1/10000. Not yet tested in other applications.
Purification :	The antibody was affinity-purified from rabbit antiserum by affinity-chromatography using epitope-specific immunogen.
Concentration :	1 mg/ml
Storage_stability :	-20°C/1 year
Msds :	MSDS_Antibody.pdf
Other_name :	MZF1; MZF; ZNF42; ZSCAN6; Myeloid zinc finger 1; MZF-1; Zinc finger and SCAN domain-containing protein 6; Zinc finger protein 42
Molecular Weight :	82KD

## Product Images



Western Blot analysis of various cells using MZF-1 Polyclonal Antibody diluted at 1 : 2000 cells nucleus extracted by Minute TM Cytoplasmic and Nuclear Fractionation kit (SC-003, Inventbiotech, MN, USA).