

N/H/K-Ras Polyclonal Antibody

Catalog_no :	AT2960
Applications :	WB,IHC-p,ELISA
Reactivity :	Human,Mouse,Rat
Category :	抗原抗体
Size :	100µg/50µg/20µg
Gene_name :	NRAS/HRAS/KRAS
Protein_name :	GTPase Nras/GTPase Hras/GTPase Kras
Humangene_id :	3265/3845/4893
Humanswissprot_no :	P01111/P01112/P01116
Mousegene_id :	15461/16653
Ratgene_id :	24605/293621/24525
Ratswissprot_no :	Q04970/P20171/P08644
Immunogen :	The antiserum was produced against synthesized peptide derived from human RASH/RASK. AA range:1-50
Specificity :	N/H/K-Ras Polyclonal Antibody detects endogenous levels of N/H/K-Ras protein.
Formulation :	Liquid in PBS containing 50% glycerol, 0.5% BSA and 0.02% sodium azide.
Source :	Rabbit
Dilution :	Western Blot: 1/500 - 1/2000. Immunohistochemistry: 1/100 - 1/300. ELISA: 1/20000. Not yet tested in other applications.
Purification :	The antibody was affinity-purified from rabbit antiserum by affinity-chromatography using epitope-specific immunogen.
Concentration :	1 mg/ml
Storage_stability :	-20°C/1 year
Msds :	MSDS_Antibody.pdf
Other_name :	NRAS; HRAS1; GTPase NRas; Transforming protein N-Ras; HRAS; HRAS1; GTPase HRas; H-Ras-1; Ha-Ras; Transforming protein p21; c-H-ras; p21ras; KRAS; KRAS2; RASK2; GTPase

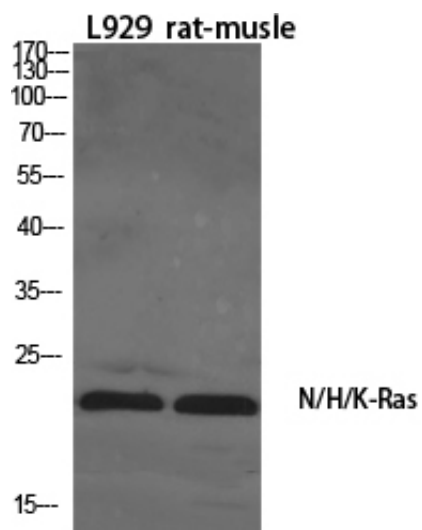


KRas; K-Ras 2; Ki-Ras; c-K-ras; c-Ki-ras

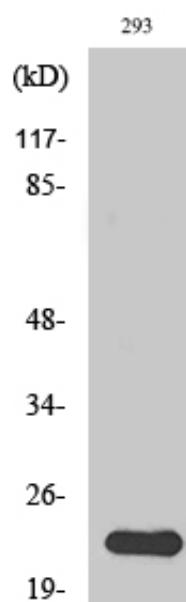
Molecular
Weight :

21KD

Product Images



Western Blot analysis of various cells using N/H/K-Ras Polyclonal Antibody diluted at 1 : 1000



Western Blot analysis of 293 cells using N/H/K-Ras Polyclonal Antibody diluted at 1 : 1000