

N33 Polyclonal Antibody

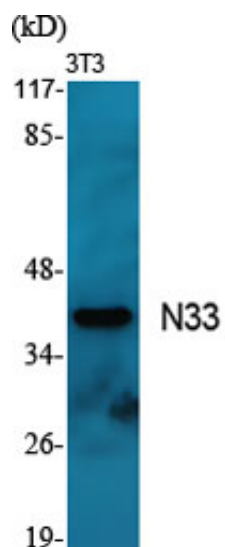
Catalog_no :	AT2961
Applications :	WB,IHC-p,IF,ELISA
Reactivity :	Human,Mouse,Rat
Category :	抗原抗体
Size :	100µg/50µg/20µg
Gene_name :	TUSC3
Protein_name :	Tumor suppressor candidate 3
Humangene_id :	7991
Humanswissprot_no :	Q13454
Mousegene_id :	80286
Mouseswissprot_no :	Q8BTV1
Immunogen :	The antiserum was produced against synthesized peptide derived from human TUSC3. AA range:131-180
Specificity :	N33 Polyclonal Antibody detects endogenous levels of N33 protein.
Formulation :	Liquid in PBS containing 50% glycerol, 0.5% BSA and 0.02% sodium azide.
Source :	Rabbit
Dilution :	Western Blot: 1/500 - 1/2000. Immunohistochemistry: 1/100 - 1/300. Immunofluorescence: 1/200 - 1/1000. ELISA: 1/10000. Not yet tested in other applications.
Purification :	The antibody was affinity-purified from rabbit antiserum by affinity-chromatography using epitope-specific immunogen.
Concentration :	1 mg/ml
Storage_stability :	-20°C/1 year
Msds :	MSDS_Antibody.pdf
Other_name :	TUSC3; N33; Tumor suppressor candidate 3; Magnesium uptake/transporter TUSC3; Protein N33



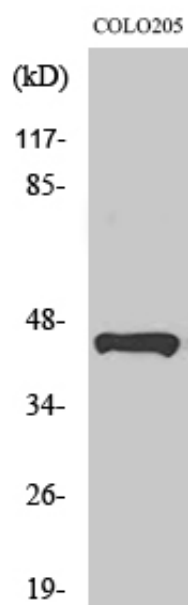
Molecular
Weight :

39KD

Product Images



Western Blot analysis of various cells using N33 Polyclonal Antibody



Western Blot analysis of HeLa cells using N33 Polyclonal Antibody