

Na⁺ CP type II β Polyclonal Antibody

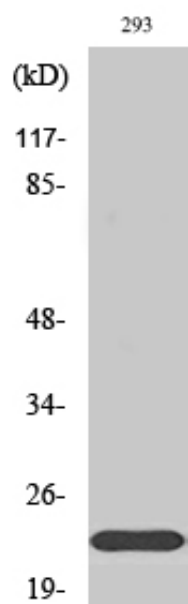
Catalog_no :	AT2965
Applications :	WB,ELISA
Reactivity :	Human,Mouse,Rat
Category :	抗原抗体
Size :	100 μ g/50 μ g/20 μ g
Gene_name :	SCN2B
Protein_name :	Sodium channel subunit beta-2
Humangene_id :	6327
Humanswissprot_no :	O60939
Mousegene_id :	72821
Mouseswissprot_no :	Q56A07
Ratgene_id :	25349
Ratswissprot_no :	P54900
Immunogen :	The antiserum was produced against synthesized peptide derived from human SCN2B. AA range:71-120
Specificity :	Na ⁺ CP type II β Polyclonal Antibody detects endogenous levels of Na ⁺ CP type II β protein.
Formulation :	Liquid in PBS containing 50% glycerol, 0.5% BSA and 0.02% sodium azide.
Source :	Rabbit
Dilution :	Western Blot: 1/500 - 1/2000. ELISA: 1/20000. Not yet tested in other applications.
Purification :	The antibody was affinity-purified from rabbit antiserum by affinity-chromatography using epitope-specific immunogen.
Concentration :	1 mg/ml
Storage_stability :	-20°C/1 year
Msds :	MSDS_Antibody.pdf



Other_name : SCN2B; Sodium channel subunit beta-2

Molecular Weight : 24KD

Product Images



Western Blot analysis of various cells using Na⁺ CP type II β Polyclonal Antibody