

Na⁺ CP-pan Polyclonal Antibody

Catalog_no :	<u>AT2970</u>
Applications :	<u>WB,IHC-p,IF,ELISA</u>
Reactivity :	<u>Human,Mouse,Rat</u>
Category :	<u>抗原抗体</u>
Size :	<u>100µg/50µg/20µg</u>
Gene_name :	<u>SCN1A/SCN2A/SCN3A/SCN4A/SCN5A/SCN8A/SCN9A/SCN10A/SCN11A</u>
Protein_name :	<u>Sodium channel protein type 1 subunit alpha</u>
Humangene_id :	<u>6323/6326/6328/6329/6331/6334/6335/6336/11280</u>
Humanswissprot_no :	<u>P35498/Q99250/Q9NY46/P35499/Q14524/Q9UQD0/Q15858/Q9Y5Y9/Q9UI33</u>
Mousegene_id :	<u>110880</u>
Ratgene_id :	<u>81574/24766/497770/25722</u>
Ratswissprot_no :	<u>P04774/P04775/P08104/P15390</u>
Immunogen :	<u>The antiserum was produced against synthesized peptide derived from human Sodium Channel. AA range:1466-1515</u>
Specificity :	<u>Na⁺ CP-pan Polyclonal Antibody detects endogenous levels of Na⁺ CP-pan protein.</u>
Formulation :	<u>Liquid in PBS containing 50% glycerol, 0.5% BSA and 0.02% sodium azide.</u>
Source :	<u>Rabbit</u>
Dilution :	<u>Western Blot: 1/500 - 1/2000. Immunohistochemistry: 1/100 - 1/300. Immunofluorescence: 1/200 - 1/1000. ELISA: 1/20000. Not yet tested in other applications.</u>
Purification :	<u>The antibody was affinity-purified from rabbit antiserum by affinity-chromatography using epitope-specific immunogen.</u>
Concentration :	<u>1 mg/ml</u>
Storage_stability :	<u>-20°C/1 year</u>
Msds :	<u>MSDS_Antibody.pdf</u>
Other_name :	<u>SCN1A; NAC1; SCN1; Sodium channel protein type 1 subunit alpha; Sodium channel</u>

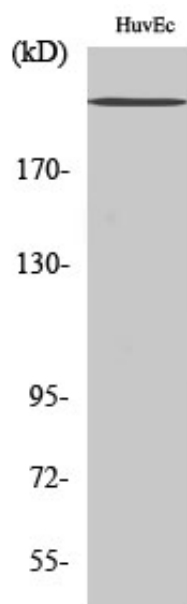


protein brain I subunit alpha; Sodium channel protein type I subunit alpha; Voltage-gated sodium channel subunit alpha Nav1.1; SCN2A; NAC2; SCN2A1; SCN2A2; Sodi

Molecular
Weight :

230KD

Product Images



Western Blot analysis of various cells using Na⁺ CP-pan Polyclonal Antibody diluted at 1 : 1000