

Na<sup>+</sup>/K<sup>+</sup>-ATPase α1 Polyclonal Antibody

Catalog_no :	AT2973
Applications :	WB,IHC-p,IF,ELISA
Reactivity :	Human,Mouse,Rat
Category :	抗原抗体
Size :	100μg/50μg/20μg
Gene_name :	ATP1A1
Protein_name :	Sodium/potassium-transporting ATPase subunit alpha-1
Humangene_id	<a href="#">476</a>
:	
Humanswissprot	<a href="#">P05023</a>
_no :	
Mousegene_id :	<a href="#">11928</a>
Mouseswissprot	<a href="#">Q8VDN2</a>
_no :	
Ratgene_id :	<a href="#">24211</a>
Ratswissprot_no	<a href="#">P06685</a>
:	
Immunogen :	The antiserum was produced against synthesized peptide derived from human ATPase. AA range:5-54
Specificity :	Na <sup>+</sup> /K <sup>+</sup> -ATPase α1 Polyclonal Antibody detects endogenous levels of Na <sup>+</sup> /K <sup>+</sup> -ATPase α1 protein.
Formulation :	Liquid in PBS containing 50% glycerol, 0.5% BSA and 0.02% sodium azide.
Source :	Rabbit
Dilution :	Western Blot: 1/500 - 1/2000. Immunohistochemistry: 1/100 - 1/300. Immunofluorescence: 1/200 - 1/1000. ELISA: 1/10000. Not yet tested in other applications.
Purification :	The antibody was affinity-purified from rabbit antiserum by affinity-chromatography using epitope-specific immunogen.
Concentration :	1 mg/ml
Storage_stability	-20°C/1 year
:	

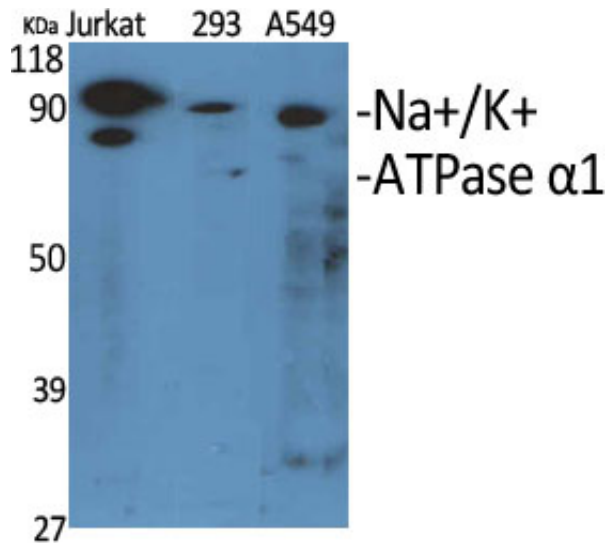


---

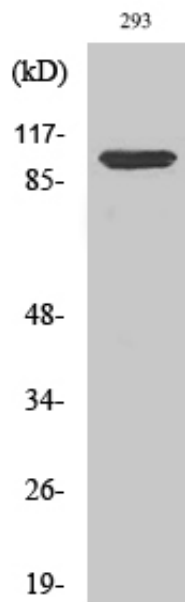
MsdS :	<a href="#">MSDS_Antibody.pdf</a>
Other_name :	<a href="#">ATP1A1; Sodium/potassium-transporting ATPase subunit alpha-1; Na(+)/K(+) ATPase alpha-1 subunit; Sodium pump subunit alpha-1</a>
Molecular Weight :	<a href="#">112KD</a>

---

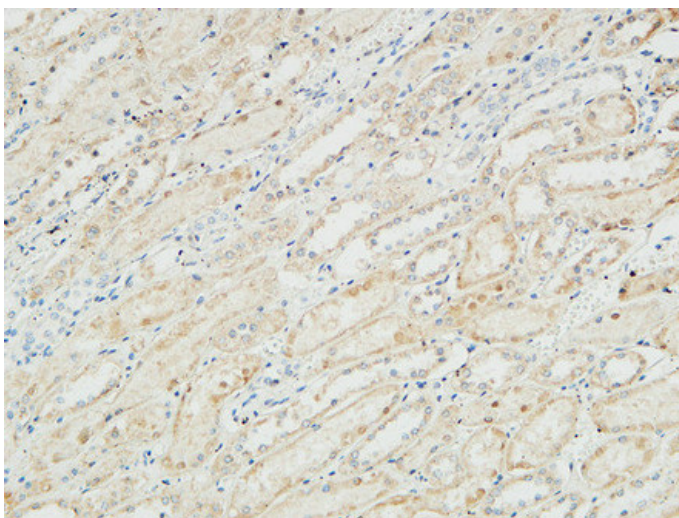
## Product Images



Western Blot analysis of various cells using Na<sup>+</sup>/K<sup>+</sup>-ATPase α1 Polyclonal Antibody diluted at 1 : 1000

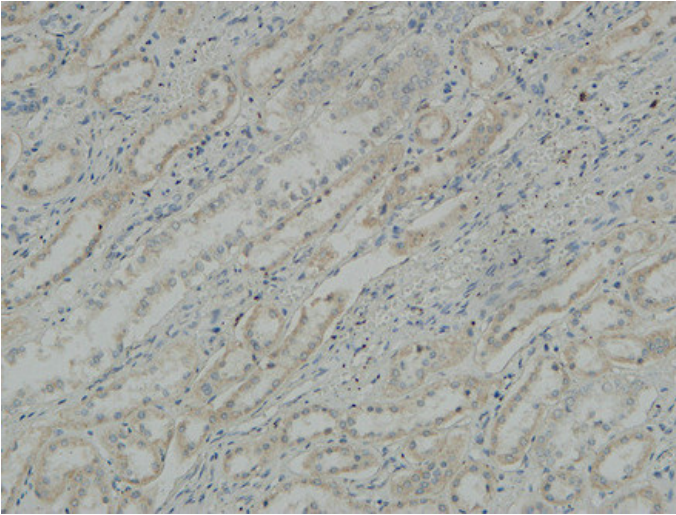


Western Blot analysis of 293 cells using Na<sup>+</sup>/K<sup>+</sup>-ATPase α1 Polyclonal Antibody diluted at 1 : 1000

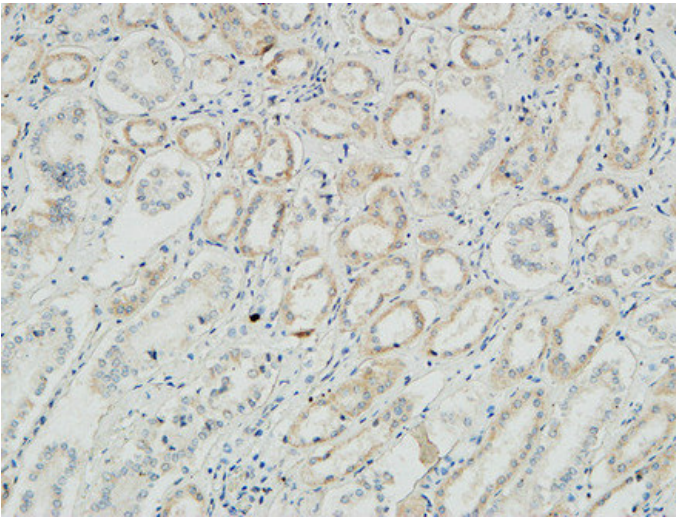


Immunohistochemical analysis of paraffin-embedded Human kidney. 1, Antibody was diluted at 1:100(4°, overnight). 2, High-pressure and temperature EDTA, pH8.0 was used for antigen retrieval. 3, Secondary antibody was diluted at 1:200(room temperature, 30min).

Immunohistochemical analysis of paraffin-embedded



Human kidney. 1, Antibody was diluted at 1:100(4°, overnight). 2, High-pressure and temperature EDTA, pH8.0 was used for antigen retrieval. 3, Secondary antibody was diluted at 1:200(room temperature, 30min).



Immunohistochemical analysis of paraffin-embedded Human kidney. 1, Antibody was diluted at 1:100(4°, overnight). 2, High-pressure and temperature EDTA, pH8.0 was used for antigen retrieval. 3, Secondary antibody was diluted at 1:200(room temperature, 30min).