

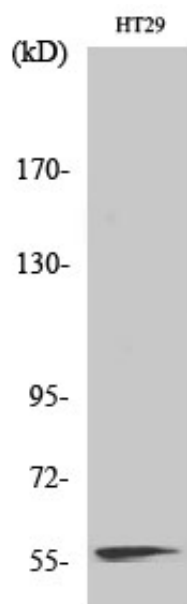
NAB2 Polyclonal Antibody

| | |
|-------------------|---|
| Catalog_no : | AT2975 |
| Applications : | WB,IHC-p,ELISA |
| Reactivity : | Human,Mouse |
| Category : | 抗原抗体 |
| Size : | 100µg/50µg/20µg |
| Gene_name : | NAB2 |
| Protein_name : | NGFI-A-binding protein 2 |
| Humangene_id | 4665 |
| : | |
| Humanswissprot | Q15742 |
| _no : | |
| Mousegene_id : | 17937 |
| Mouseswissprot | Q61127 |
| _no : | |
| Immunogen : | The antiserum was produced against synthesized peptide derived from human NAB2. AA range:261-310 |
| Specificity : | NAB2 Polyclonal Antibody detects endogenous levels of NAB2 protein. |
| Formulation : | Liquid in PBS containing 50% glycerol, 0.5% BSA and 0.02% sodium azide. |
| Source : | Rabbit |
| Dilution : | Western Blot: 1/500 - 1/2000. Immunohistochemistry: 1/100 - 1/300. ELISA: 1/10000. Not yet tested in other applications. |
| Purification : | The antibody was affinity-purified from rabbit antiserum by affinity-chromatography using epitope-specific immunogen. |
| Concentration : | 1 mg/ml |
| Storage_stability | -20°C/1 year |
| : | |
| Msds : | MSDS_Antibody.pdf |
| Other_name : | NAB2; MADER; NGFI-A-binding protein 2; EGR-1-binding protein 2; Melanoma-associated delayed early response protein; Protein MADER |
| Molecular | 56KD |



Weight :

Product Images



Western Blot analysis of various cells using NAB2 Polyclonal Antibody diluted at 1 : 1000 cells nucleus extracted by Minute TM Cytoplasmic and Nuclear Fractionation kit (SC-003, Inventbiotech, MN, USA).