

## Nap1 Polyclonal Antibody

Catalog_no :	AT2978
Applications :	WB,IHC-p,IF,ELISA
Reactivity :	Human,Mouse,Rat
Category :	抗原抗体
Size :	100µg/50µg/20µg
Gene_name :	AZI2
Protein_name :	5-azacytidine-induced protein 2
Humangene_id :	<a href="#">64343</a>
Humanswissprot_no :	<a href="#">Q9H6S1</a>
Mousegene_id :	<a href="#">27215</a>
Mouseswissprot_no :	<a href="#">Q9QYP6</a>
Ratgene_id :	<a href="#">316051</a>
Ratswissprot_no :	<a href="#">Q4KMA0</a>
Immunogen :	The antiserum was produced against synthesized peptide derived from human AZI2. AA range:10-59
Specificity :	Nap1 Polyclonal Antibody detects endogenous levels of Nap1 protein.
Formulation :	Liquid in PBS containing 50% glycerol, 0.5% BSA and 0.02% sodium azide.
Source :	Rabbit
Dilution :	Western Blot: 1/500 - 1/2000. Immunohistochemistry: 1/100 - 1/300. Immunofluorescence: 1/200 - 1/1000. ELISA: 1/20000. Not yet tested in other applications.
Purification :	The antibody was affinity-purified from rabbit antiserum by affinity-chromatography using epitope-specific immunogen.
Concentration :	1 mg/ml
Storage_stability :	-20°C/1 year

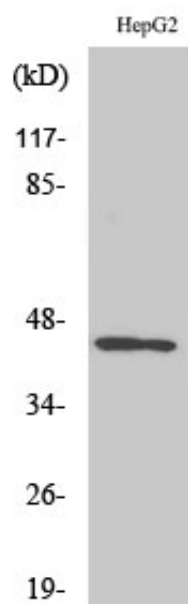


MsdS : MSDS\_Antibody.pdf

Other\_name : AZI2; NAP1; 5-azacytidine-induced protein 2; NF-kappa-B-activating kinase-associated protein 1; Nak-associated protein 1; TILP

Molecular Weight : 48KD

## Product Images



Western Blot analysis of various cells using Nap1 Polyclonal Antibody