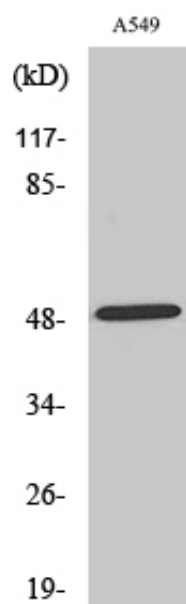


NARFL Polyclonal Antibody

Catalog_no :	AT2980
Applications :	WB,IHC-p,ELISA
Reactivity :	Human
Category :	抗原抗体
Size :	100µg/50µg/20µg
Gene_name :	NARFL
Protein_name :	Cytosolic Fe-S cluster assembly factor NARFL
Humangene_id :	64428
Humanswissprot_no :	Q9H6Q4
Immunogen :	The antiserum was produced against synthesized peptide derived from human NARFL. AA range:387-436
Specificity :	NARFL Polyclonal Antibody detects endogenous levels of NARFL protein.
Formulation :	Liquid in PBS containing 50% glycerol, 0.5% BSA and 0.02% sodium azide.
Source :	Rabbit
Dilution :	Western Blot: 1/500 - 1/2000. Immunohistochemistry: 1/100 - 1/300. ELISA: 1/40000. Not yet tested in other applications.
Purification :	The antibody was affinity-purified from rabbit antiserum by affinity-chromatography using epitope-specific immunogen.
Concentration :	1 mg/ml
Storage_stability :	-20°C/1 year
Msds :	MSDS_Antibody.pdf
Other_name :	NARFL; PRN; Cytosolic Fe-S cluster assembly factor NARFL; Iron-only hydrogenase-like protein 1; IOP1; Nuclear prelamin A recognition factor-like protein; Protein related to Narf
Molecular Weight :	50KD

Product Images



Western Blot analysis of various cells using NARFL Polyclonal Antibody cells nucleus extracted by Minute TM Cytoplasmic and Nuclear Fractionation kit (SC-003, Inventbiotech, MN, USA).