

## NARG1 Polyclonal Antibody

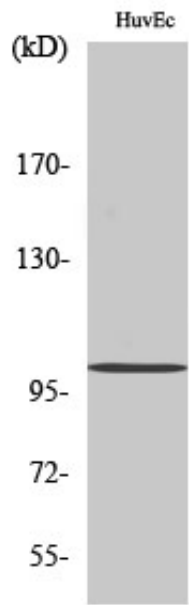
Catalog_no :	AT2981
Applications :	WB,IHC-p,IF,ELISA
Reactivity :	Human,Mouse
Category :	抗原抗体
Size :	100µg/50µg/20µg
Gene_name :	NAA15
Protein_name :	N-alpha-acetyltransferase 15 NatA auxiliary subunit
Humangene_id :	<a href="#">80155</a>
Humanswissprot_no :	<a href="#">Q9BXJ9</a>
Mouseswissprot_no :	<a href="#">Q80UM3</a>
Immunogen :	The antiserum was produced against synthesized peptide derived from human NARG1. AA range:221-270
Specificity :	NARG1 Polyclonal Antibody detects endogenous levels of NARG1 protein.
Formulation :	Liquid in PBS containing 50% glycerol, 0.5% BSA and 0.02% sodium azide.
Source :	Rabbit
Dilution :	Western Blot: 1/500 - 1/2000. Immunohistochemistry: 1/100 - 1/300. Immunofluorescence: 1/200 - 1/1000. ELISA: 1/20000. Not yet tested in other applications.
Purification :	The antibody was affinity-purified from rabbit antiserum by affinity-chromatography using epitope-specific immunogen.
Concentration :	1 mg/ml
Storage_stability :	-20°C/1 year
Msds :	<a href="#">MSDS_Antibody.pdf</a>
Other_name :	NAA15; GA19; NARG1; NATH; TBDN100; N-alpha-acetyltransferase 15; NatA auxiliary subunit; Gastric cancer antigen Ga19; N-terminal acetyltransferase; NMDA receptor-regulated protein 1; Protein tubedown-1; Tbdn100
Molecular	100KD



Weight :

---

## Product Images



Western Blot analysis of various cells using NARG1 Polyclonal Antibody