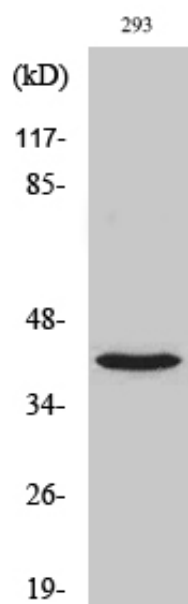




## NBPF1/9/10/12/14/15/16/20 Polyclonal Antibody

Catalog_no :	AT2984
Applications :	WB,IHC-p,ELISA
Reactivity :	Human
Category :	抗原抗体
Size :	100µg/50µg/20µg
Gene_name :	NBPF12
Protein_name :	Neuroblastoma breakpoint family member 12
Humangene_id :	<a href="#">55672/400818/284565/25832</a>
Humanswissprot_no :	<a href="#">Q5TAG4/Q6P3W6/Q5SXJ2/Q3BBV0/Q3BBW0/Q3BBV1/Q8N660/Q5TI25</a>
Immunogen :	The antiserum was produced against synthesized peptide derived from human NBPF1/9/10/12/14/15/16/20. AA range:121-150
Specificity :	NBPF1/9/10/12/14/15/16/20 Polyclonal Antibody detects endogenous levels of NBPF1/9/10/12/14/15/16/20 protein.
Formulation :	Liquid in PBS containing 50% glycerol, 0.5% BSA and 0.02% sodium azide.
Source :	Rabbit
Dilution :	Western Blot: 1/500 - 1/2000. Immunohistochemistry: 1/100 - 1/300. ELISA: 1/40000. Not yet tested in other applications.
Purification :	The antibody was affinity-purified from rabbit antiserum by affinity-chromatography using epitope-specific immunogen.
Concentration :	1 mg/ml
Storage_stability :	-20°C/1 year
Msds :	MSDS_Antibody.pdf
Other_name :	NBPF12; COAS1; KIAA1245; Neuroblastoma breakpoint family member 12; Chromosome 1 amplified sequence 1; NBPF10; Neuroblastoma breakpoint family member 10; NBPF16; Neuroblastoma breakpoint family member 16; NBPF1; KIAA1693; Neuroblastoma brea
Molecular Weight :	36KD

## Product Images



Western Blot analysis of various cells using  
NBPF1/9/10/12/14/15/16/20 Polyclonal Antibody