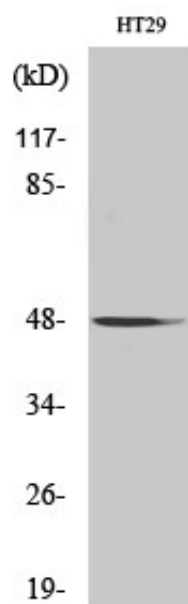


NBPF7 Polyclonal Antibody

Catalog_no :	AT2987
Applications :	WB,ELISA
Reactivity :	Human
Category :	抗原抗体
Size :	100µg/50µg/20µg
Gene_name :	NBPF7
Protein_name :	Putative neuroblastoma breakpoint family member 7
Humangene_id :	343505
Humanswissprot_no :	P0C2Y1
Immunogen :	The antiserum was produced against synthesized peptide derived from human NBPF7. AA range:361-410
Specificity :	NBPF7 Polyclonal Antibody detects endogenous levels of NBPF7 protein.
Formulation :	Liquid in PBS containing 50% glycerol, 0.5% BSA and 0.02% sodium azide.
Source :	Rabbit
Dilution :	Western Blot: 1/500 - 1/2000. ELISA: 1/40000. Not yet tested in other applications.
Purification :	The antibody was affinity-purified from rabbit antiserum by affinity-chromatography using epitope-specific immunogen.
Concentration :	1 mg/ml
Storage_stability :	-20°C/1 year
Msds :	MSDS_Antibody.pdf
Other_name :	NBPF7; Putative neuroblastoma breakpoint family member 7
Molecular Weight :	48KD

Product Images



Western Blot analysis of various cells using NBPF7 Polyclonal Antibody