

NCAM-L1 Polyclonal Antibody

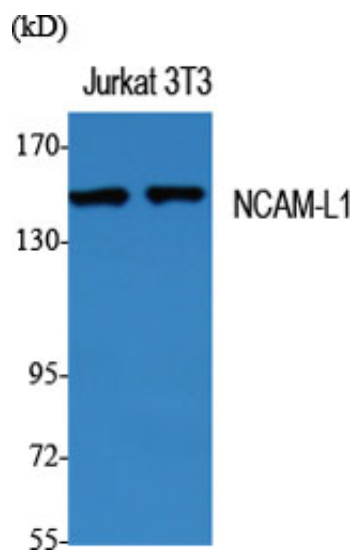
Catalog_no :	AT2990
Applications :	WB,IHC-p,IF,ELISA
Reactivity :	Human,Mouse,Rat
Category :	抗原抗体
Size :	100µg/50µg/20µg
Gene_name :	L1CAM
Protein_name :	Neural cell adhesion molecule L1
Humangene_id :	3897
Humanswissprot_no :	P32004
Mouseswissprot_no :	P11627
Ratgene_id :	50687
Ratswissprot_no :	Q05695
Immunogen :	The antiserum was produced against synthesized peptide derived from human CD171/NCAM L1. AA range:1147-1196
Specificity :	NCAM-L1 Polyclonal Antibody detects endogenous levels of NCAM-L1 protein.
Formulation :	Liquid in PBS containing 50% glycerol, 0.5% BSA and 0.02% sodium azide.
Source :	Rabbit
Dilution :	Western Blot: 1/500 - 1/2000. Immunohistochemistry: 1/100 - 1/300. Immunofluorescence: 1/200 - 1/1000. ELISA: 1/20000. Not yet tested in other applications.
Purification :	The antibody was affinity-purified from rabbit antiserum by affinity-chromatography using epitope-specific immunogen.
Concentration :	1 mg/ml
Storage_stability :	-20°C/1 year
Msds :	MSDS_Antibody.pdf



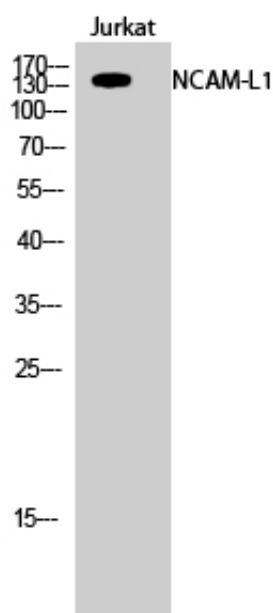
Other_name : L1CAM; CAML1; MIC5; Neural cell adhesion molecule L1; N-CAM-L1; NCAM-L1; CD antigen CD171

Molecular Weight : 180KD

Product Images



Western Blot analysis of various cells using NCAM-L1 Polyclonal Antibody



Western Blot analysis of Jurkat cells using NCAM-L1 Polyclonal Antibody